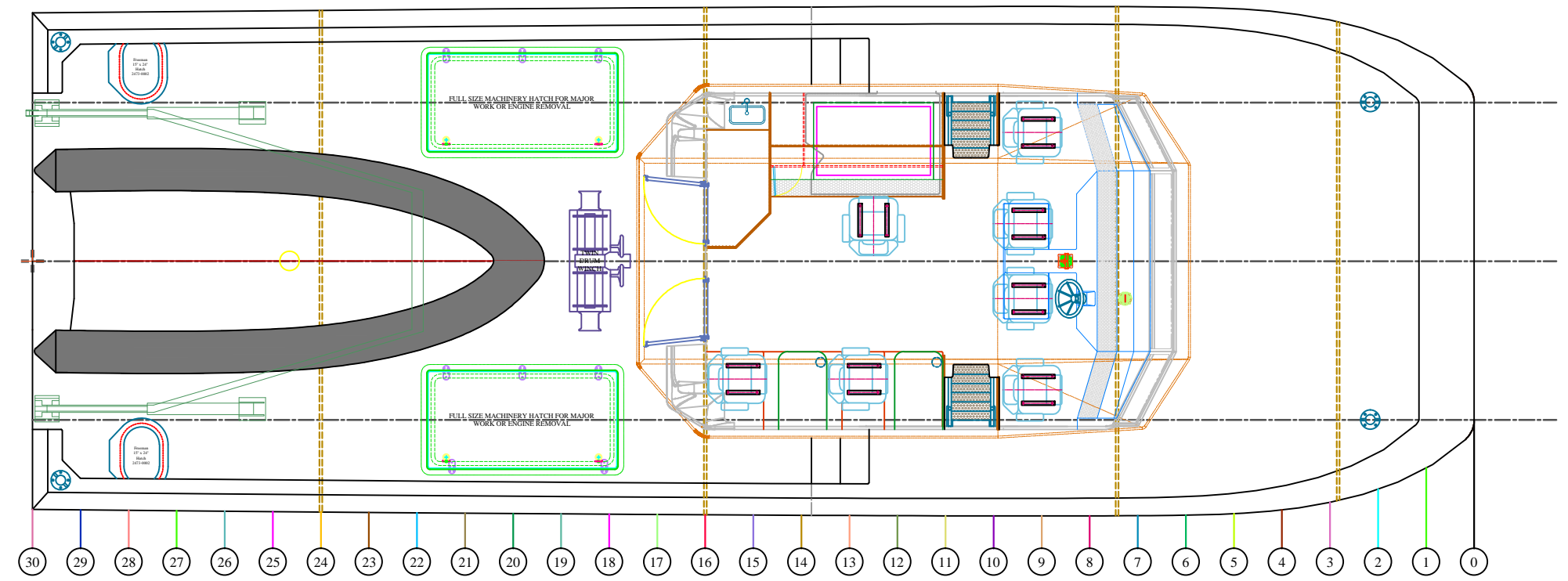
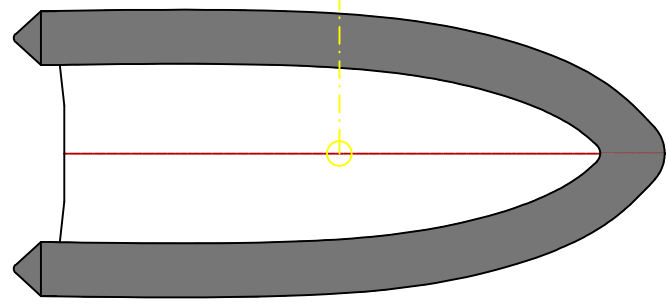
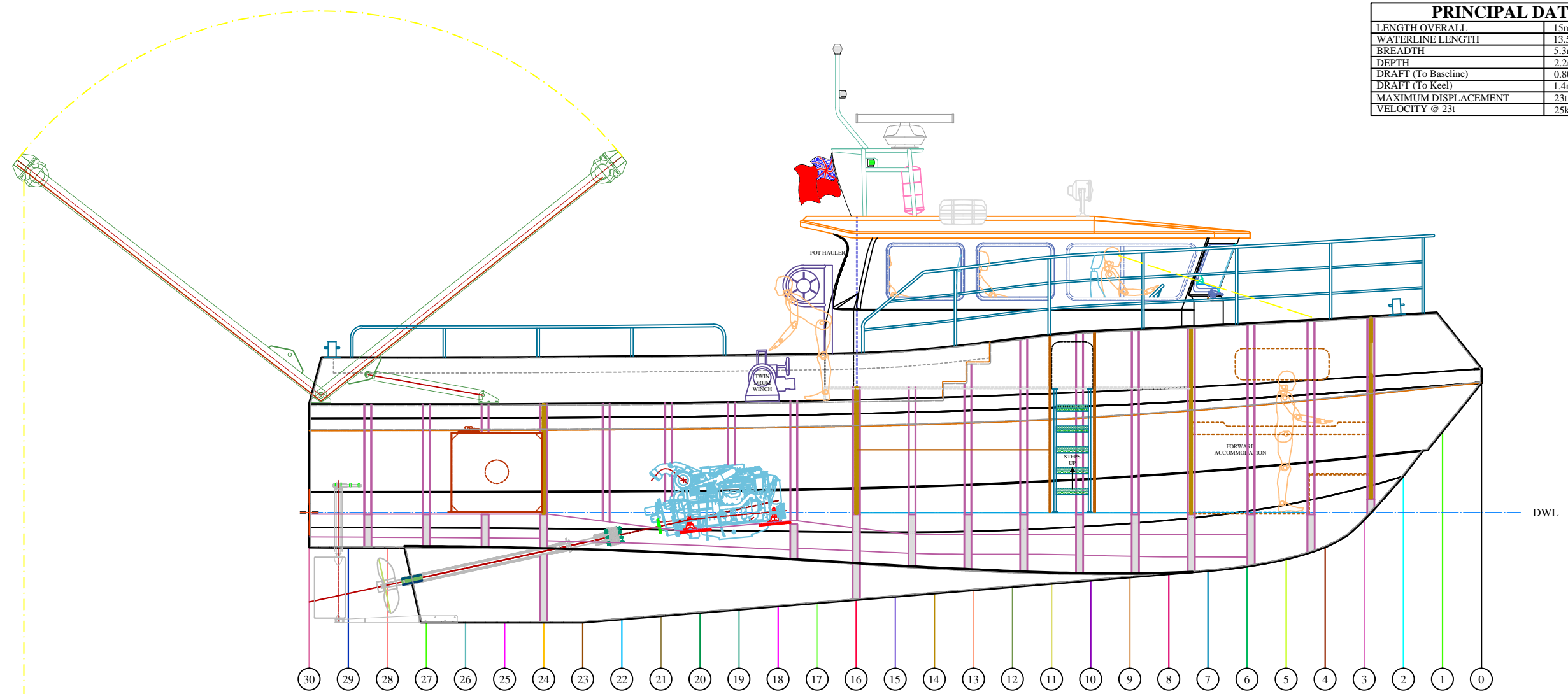


PRINCIPAL DATA	
LENGTH OVERALL	15m
WATERLINE LENGTH	13.58m
BREADTH	5.3m
DEPTH	2.2m
DRAFT (To Baseline)	0.80m
DRAFT (To Keel)	1.4m
MAXIMUM DISPLACEMENT	23t
VELOCITY @ 23t	25kn



Issue	Date	Detail of Modification from Original Issue
1	Date as Title Block	Details of drawing provided in Title Block, subsequent modifications detailed below
2	12 May 2014	Main deck longitudinal stringers added to reduce panel size for designed deck loads and vessel data added
3		
4		

Issue	Date	Detail of Modification from Original Issue
5		
6		
7		
8		

Issue	Date	Detail of Modification from Original Issue
9		
10		
11		
12		

This Drawing is Confidential and must not be used for Manufacture, Export or Construction to any other Person without the Express Permission of Goodchild Marine Services Limited.
 Tel: 01493 782800
 Fax: 01493 782896
 Email: info@goodchildmarine.co.uk



Title: Northumberland Sea Fisheries	
Description: General Arrangement	
Drawn by Alan Goodchild	Date 07 May 2014
Always quote Drawing Number below in all communications	
Scale 1:30 @ A1	
Drawing Number : General Arrangement (1 of 8)	