

Notice to Marine Users No 10 / 2015 Teesside Offshore Wind Farm



10th September 2015

Important Notice to All Marine Users

Between the 13th September and 20th September (subject to weather) the following activities will be undertaken on the Teesside Offshore Windfarm:

Bird Survey

A bird survey is planned as part of the post construction survey programme to be undertaken on the 14th September 2015: following completion of this survey the vessel will undertake cleaning of the Waverider Buoy onsite.

Vessel name – Princess Royal

Vessel details - <http://www.ncl.ac.uk/marine/facilities/princessroyal/>

Call sign- 2EYM2

Mobile- 07730979784

Email- neil.armstrong@ncl.ac.uk



Geophysical Survey

The works will involve the vessel MV Lia undertaking both multi-beam and side scan sonar surveys within the wind farm (**Chart 1**). Fishermen are advised to liaise directly with Specialist Marine Consultants Ltd. A previous geophysical survey was conducted during March 2015.

Vessel name:	MV Lia
Call Sign:	MERD8
Contact Details:	+44 (0) 7740 023510 lia@osirisprojects.co.uk
Scope of Works:	Geophysical– Multi-beam and Sidescan Sonar
Duration:	5 Days Survey (Weather Permitting) Operating from Hartlepool
Operational Parameters	Vessel will be conducting 12 hour operations during daylight hours.

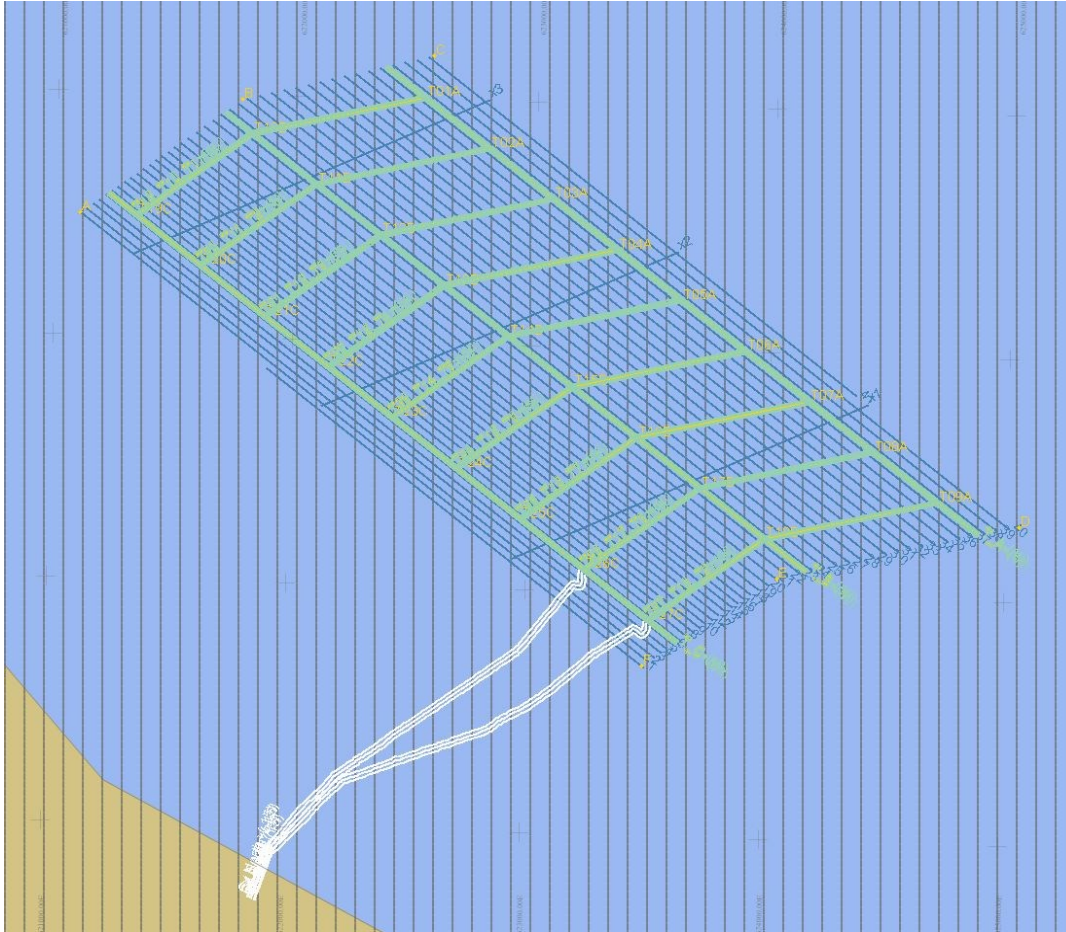


**Notice to Marine Users No 10 / 2015
Teesside Offshore Wind Farm**

10th September 2015



Chart 1: Line Plan of Geophysical Survey



The MV Lia will be conducting surveys within the turbine arrays and export cable corridor only.

**For fisheries enquiries, please contact:
Simon Prince – Fisheries Liaison Co-ordinator
Specialist Marine Consultants Ltd
Hill Farm, Bartindale Road,
Hunmanby
YO14 0JD
+44 (0)1723 892 861
+44 (0) 7920 273866
Email:simonp@smchse.com**