



## **VESSEL PROGRESS REPORT – 04**

### ***Northumberland Inshore Fisheries & Conservation Authority Fisheries Patrol & Survey Catamaran***

**From:** 4<sup>th</sup> July 2014

**To:** 11<sup>th</sup> August 2014

#### **PROGRESS** (Summary of work completed during reporting period)

**Hull Construction:** All mould tool work completed.

Starboard hull fully layed up in accordance to laminate schedule.

Gunwale combing fitted, final laminate schedule being applied.

Scheduled to be joined together week commencing 11<sup>th</sup> August 14.

Girders, frames and stringers scheduled for fitment week commencing 18<sup>th</sup> August 14.

**Hull Raft / Bridgedeck Construction:** Build support and frames currently undergoing construction.

**Wheelhouse Construction:** Awaiting commencement of GRP construction works.

**General Construction:** 10 of 16 composite deck beams constructed, ready for fitment.

Foam frames and stringers currently being cut from CNC patterns

**Accommodation Construction:** GRP heads unit constructed and undergoing fit out works.

**Drawing Packages:** Construction drawing package complete.

Stern gear detailed and currently undergoing checks with manufacture prior to order.

General arrangement / internal layout confirmed and alterations noted.

Updated drawings provided to NIFCA representatives during site visit

**Machinery:** Cummins UK currently confirming specification changes and expected delivery times on the QSC 8.3 500 INT engines, Twin Disc MGX 5086A gearboxes and Onan 7 KVA generator.

**Ancillary Items:** 5.3mtr RHIB specification confirmed by NIFCA representatives, ordered and is currently scheduled for delivery early November 14.

**Notes:** Vessel is to be 16mtrs in length, confirmed week commencing 21<sup>st</sup> July 14.

Site meeting held with NIFCA representatives on Thursday 7<sup>th</sup> August to oversee progress.

First hull due for completion week commencing 25<sup>th</sup> August 14.



*Hull mould tooling completed*



*Mould tool undergoing surface preparation*



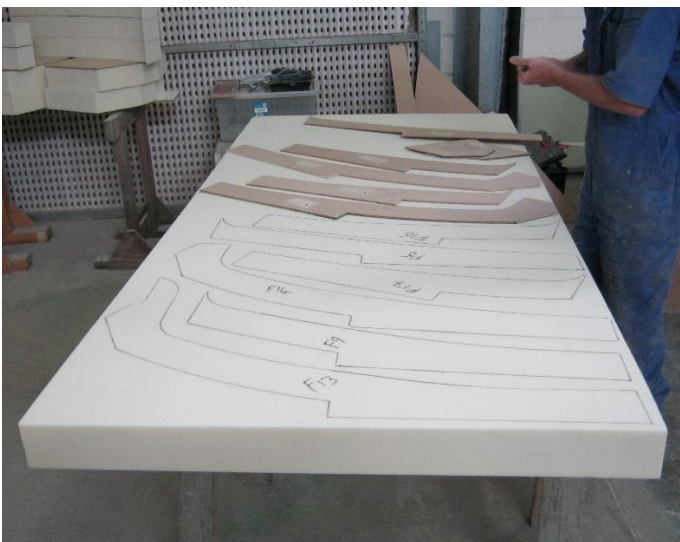
**Stage 1:** *Gel coats applied to topsides*



*Stage 2: Application of GRP laminates*

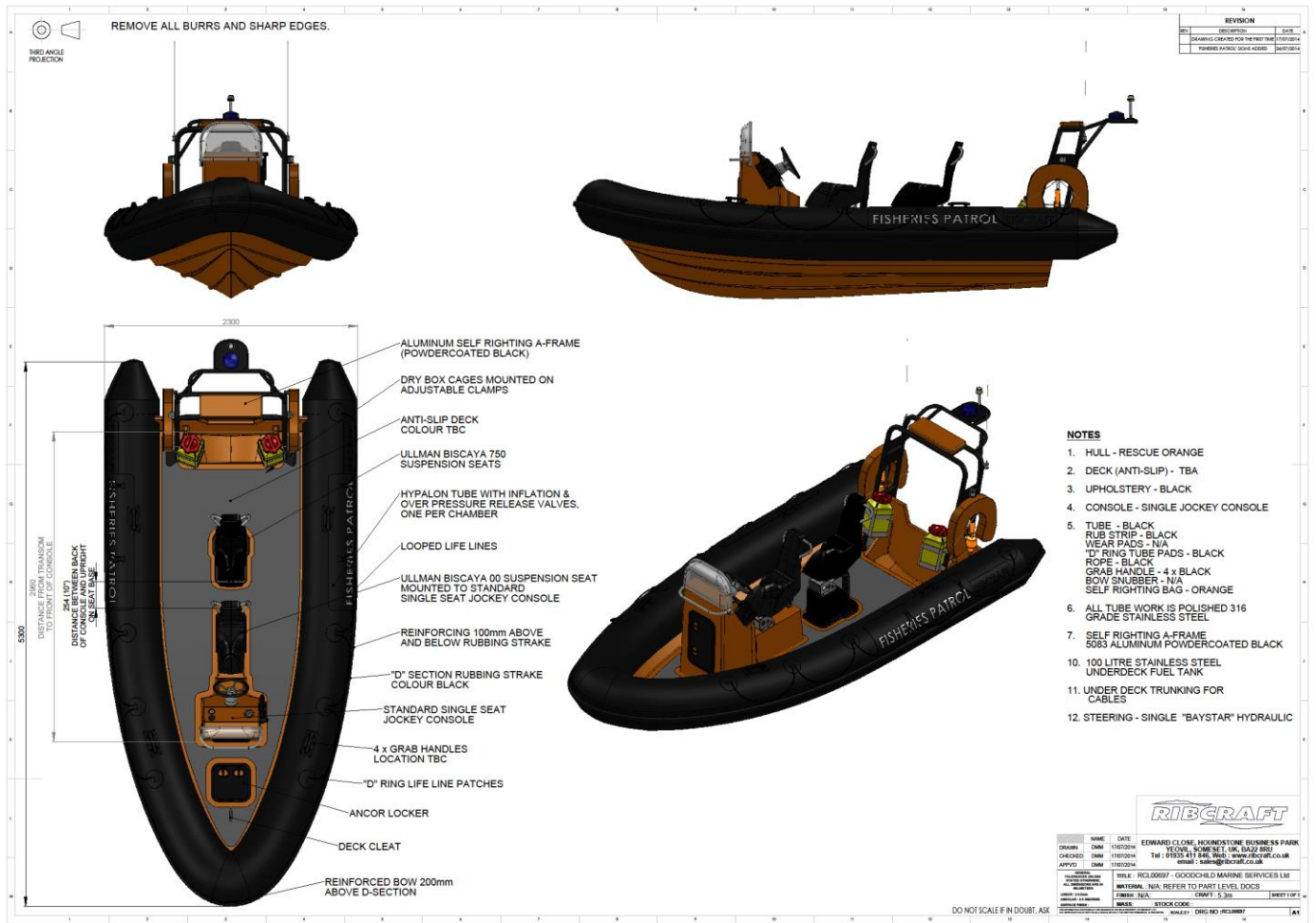


*Gunwale / combing undergoing lamination process*



*Foam frames being cut in readiness of fitment*





Ribcraft Commercial 5.3m RHIB specification

**Goodchild Marine Services Limited**  
 01493 782301  
[info@goodchildmarine.co.uk](mailto:info@goodchildmarine.co.uk)