



## VESSEL PROGRESS REPORT – 05

### **Northumberland Inshore Fisheries & Conservation Authority Fisheries Patrol & Survey Catamaran**

**From:** 11<sup>th</sup> August 2014

**To:** 1<sup>st</sup> October 2014

#### **PROGRESS** (Summary of work completed during reporting period)

**Hull Construction:** Girders, frames and stringers fully constructed in accordance with construction schedule. Engine beds complete with steel tapping plates installed ready to accept power units. Released for mould tooling, weighed and set up in build cradle.

**Port hull section construction mid stage, due for join up end of week commencing 29<sup>th</sup> September 14**

**Hull Raft / Bridgedeck Construction:** Build support and frames fully constructed. Awaiting full construction of portside hull.

**Wheelhouse Construction:** Both port and starboard sections fully constructed and released from the mould tooling.

Sections currently be joined together (centerline). Available to view and walk through 16<sup>th</sup> - 17<sup>th</sup> October  
Wheelhouse sole undergoing construction

**General Construction:** 16 composite deck beams constructed, ready for fitment.

All main weather deck sections "machinery / shipping hatch section" constructed and released for tooling constructed.

Deck / engine shipping hatch (hinged lids) constructed

**Accommodation Construction:** GRP heads unit fully constructed ready for fitment into portside hull.

Chart / work station (port and starboard) designed and is currently under construction. Available to view 16<sup>th</sup> - 17<sup>th</sup> October

**Drawing Packages:** General arrangement / internal layout confirmed and alterations noted.

Updated drawings provided to NIFCA representatives during last site visit

A frame gantry designed and is currently undergoing FEA Study (finite element analysis) prior to manufacture.

**Machinery:** Cummins QSC 8.3 500 INT engines, Twin Disc MGX 5086A gearboxes and Onan 7 KVA generator ordered.

Stern gear and hydraulic steering system ordered. Scheduled delivery mid-October 14

**Hydraulic Systems:** 1000kg trawl winch, pot hauler, 2000kg drum winch and all ancillaries ordered. Scheduled for delivery early November 14

**Electrical / Electronics:** Furuno navigation package ordered, scheduled delivery early November 14.

**Ancillary Items:** 5.3mtr RHIB specification confirmed by NIFCA representatives, ordered and is currently scheduled for delivery early November 14.

**Notes:** Vessel is to be 16mtrs in length, confirmed week commencing 21<sup>st</sup> July 14.

Site meeting and committee member tour of the project scheduled for 16<sup>th</sup> - 17<sup>th</sup> October 14

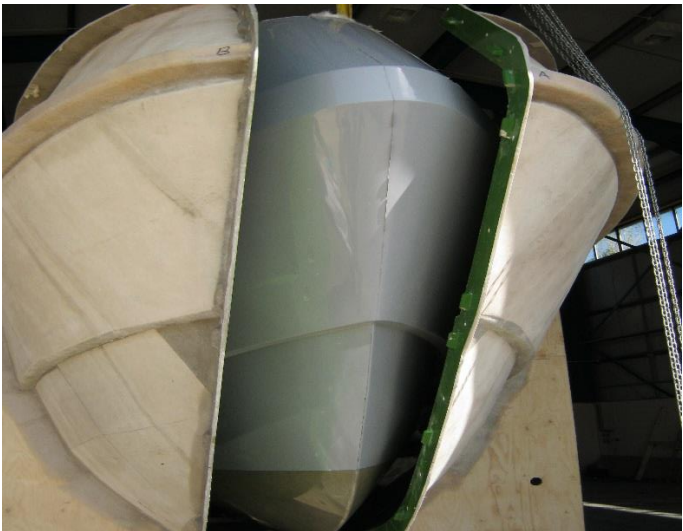
Construction survey carried out by SeaFish representative, report submitted

Registered with Mecal Ltd (working on behalf of MCA) to carry out Code of Practice survey

Wheelhouse seating confirmed at KAB 514 (cloth trim)



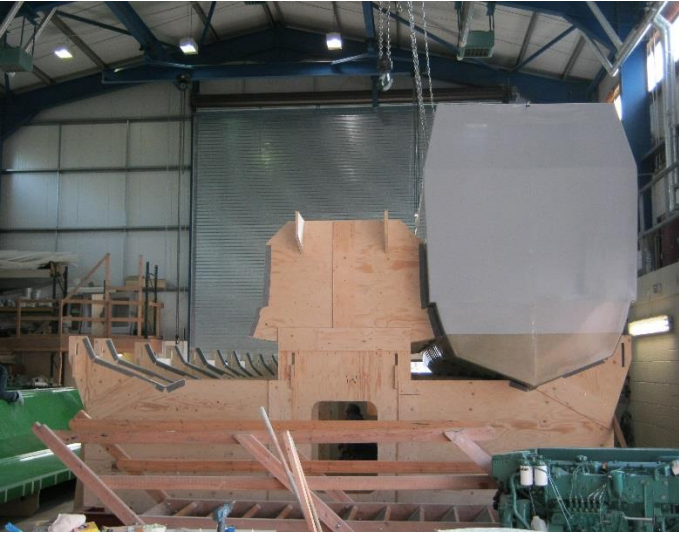
*Fully framed and completed starboard hull ready for mould release*



*Starboard hull released from mould tooling*



*Hull lines and proportions*



*Starboard hull positioned in build cradle*



*Port Hull: Application of GRP laminates*



*Looking Aft: Wheelhouse undergoing join up process*



*Looking Forward: Wheelhouse undergoing join up process*



*Wheelhouse from above*