



VESSEL PROGRESS REPORT – 02

Northumberland Inshore Fisheries & Conservation Authority Fisheries Patrol & Survey Catamaran

From: 1st April 2014

To: 1st June 2014

PROGRESS (Summary of work completed during reporting period)

Hull: Fully plated and faired up. Paint application and surface preparation scheduled for 2nd June.
Scaffolding and safety rails erected around the hull plug
Materials ordered and delivered for tooling manufacture

Wheelhouse: Mould tool alterations complete, Laminate structure calculations confirmed, materails order and awaiting commencement of the moulding schedule.

Drawing Packages: General arrangement (GA) completed and approved by the NIFCA representatives for construction.

Construction and laminated schedules designed, drawn up and submitted to Mecal Limited for approval.
Electronic copies forward to representatives.
3D renderings of the completed vessel submitted to representatives

Machinery: Currently in negotiations with Cummins UK regarding propulsion package, meeting scheduled with Cummins UK at Seawork 14

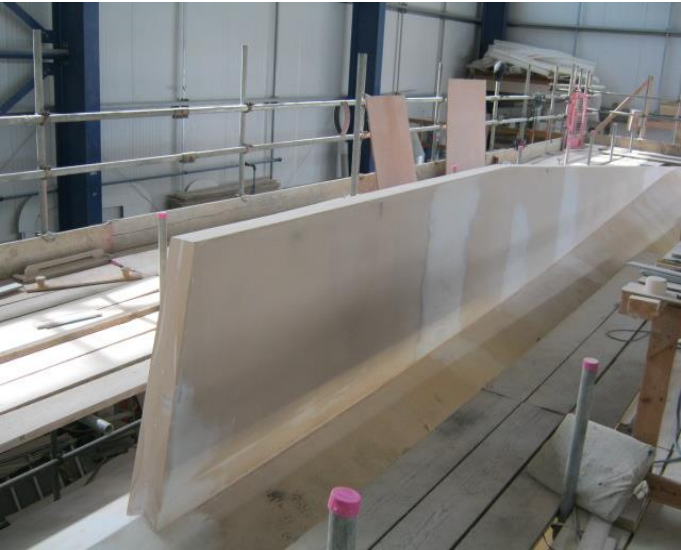
Notes: Meeting with Ribcraft, Goodchild Marine and NIFCA representatives scheduled of 10th June at Seawork 2014 to discuss 5.3m commercial RHIB procurement .
Awaiting return of Lloyds structural assessment booklet from Mecal Limited



Bow section filled and faired



Keel section looking aft, filled and faired



Keel section looking forward, filled and faired



Bow and forefoot section looking aft, filled and faired