

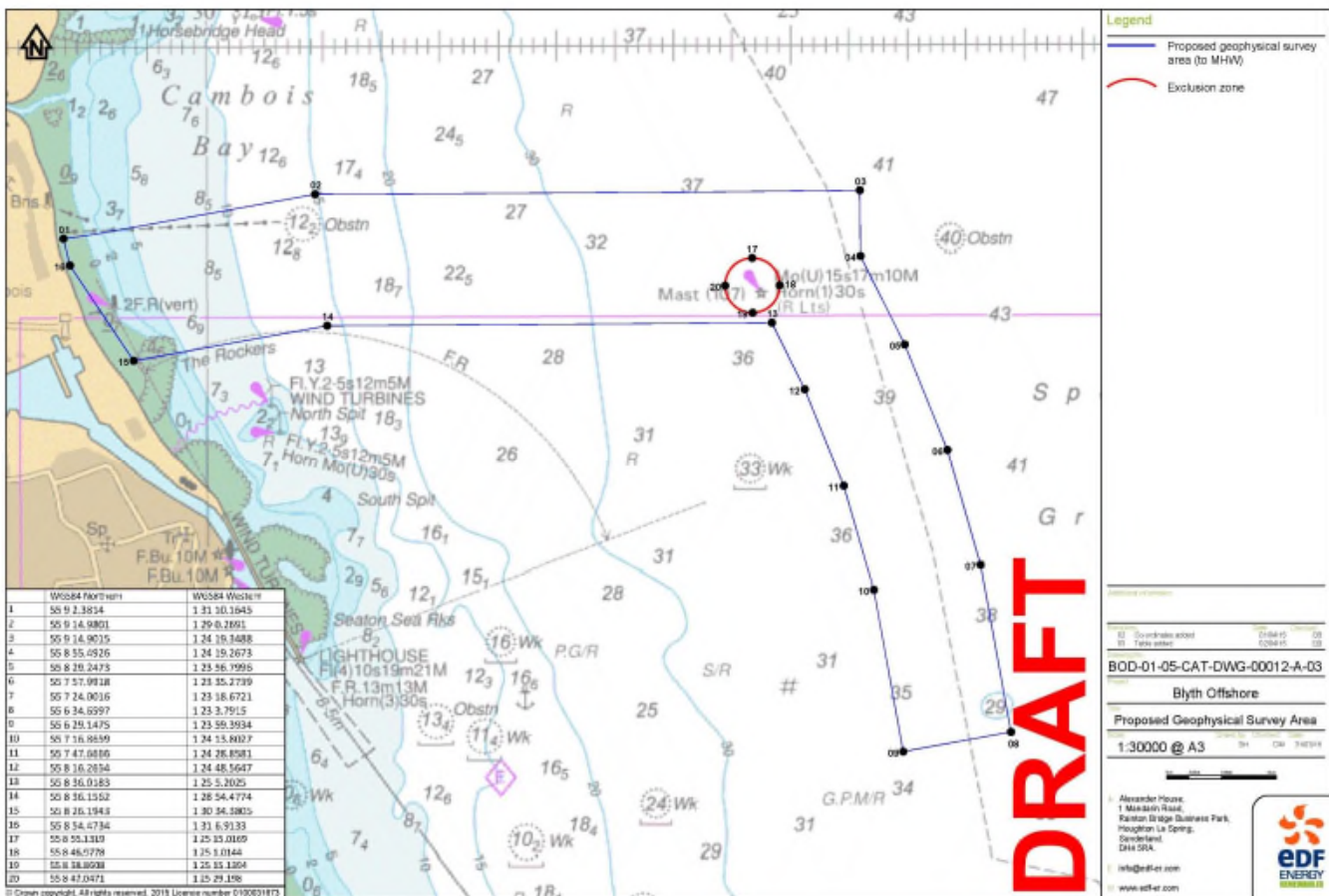
# NOTICE TO MARINERS

9<sup>th</sup> July 2015

Please be advised that Geo will be performing site investigation works on behalf of Blyth Offshore Wind Demonstrator Project within the bounds of the coordinates presented below.

The vessel Blue Beta and Princess Royal will commence operations within these coordinates within a period between 16<sup>th</sup> July to 16<sup>th</sup> August. The total quantity of operational time at the site is estimated to app. 1-2 weeks. Please note, the works may incur periods where neither vessel is operating.

## Site Plan



## Blue Beta

The vessel Blue Beta is a DP II (Dynamically Positioned) vessel and for the majority of the period of works will have restricted ability to maneuver. We request that all vessels within the vicinity of the Blue Alfa remain at least 500m clear at all times and pass at a reduced speed.

The vessel will be displaying the relevant RAM lights and displays during periods of restricted maneuverability.

## Blue Beta



Call sign: OUVZ2

IMO: 8112665

Contacts: VHF Channel 16, 6 and 67

Any enquiries can be directed to the following contact:

Martin Hoffmann, Geo

mhf@geo.dk; +45 45204174

## Princess Royal

This vessel will be transiting the survey area intermittently during the works.

### Princess Royal



Vessel name – Princess Royal

Vessel details - <http://www.ncl.ac.uk/marine/facilities/princessroyal/>

Call sign- 2EYM2

Any enquiries can be directed to the following contact:

Neil Armstrong, Newcastle University

[neil.armstrong@ncl.ac.uk](mailto:neil.armstrong@ncl.ac.uk); 07730979784

#### DISTRIBUTION LIST:

[Navigation.Director@thls.org](mailto:Navigation.Director@thls.org)

[noticetomariners@ukho.gov.uk](mailto:noticetomariners@ukho.gov.uk)

[SAR.response@mcga.gov.uk](mailto:SAR.response@mcga.gov.uk)

[navigation.director@thls.org](mailto:navigation.director@thls.org)

[navwarnings@btconnect.com](mailto:navwarnings@btconnect.com)

[whc@harbouroffice.fsnet.co.uk](mailto:whc@harbouroffice.fsnet.co.uk)

[info@blythlifeboat.co.uk](mailto:info@blythlifeboat.co.uk)

[mike.nicholson@portoptyne.co.uk](mailto:mike.nicholson@portoptyne.co.uk)

[nffo@nffo.org.uk](mailto:nffo@nffo.org.uk)

[kingfisher@seafish.co.uk](mailto:kingfisher@seafish.co.uk)

[sec@pba.org.uk](mailto:sec@pba.org.uk)

[sdr@ukho.gov.uk](mailto:sdr@ukho.gov.uk)

[operations@hmcg.gov.uk](mailto:operations@hmcg.gov.uk)

[marina@amble.co.uk](mailto:marina@amble.co.uk)

[martin.willis@portofblyth.co.uk](mailto:martin.willis@portofblyth.co.uk)

[nifca@nifca.gov.uk](mailto:nifca@nifca.gov.uk)



---

northshields@marinemanagement.org.uk  
info@rnyc.org.uk  
Craig.Harwood@thecrownestate.co.uk  
Mark.Lawson@edf-er.com  
Sebastien.swieton@edf-er.com  
Chris.Holden@res-offshore.com  
neil.armstrong@ncl.ac.uk  
john.watson@ore.catapult.org.uk

royalquaysmarina@quaymarinas.com  
jessica.campbell@thecrownestate.co.uk  
BOD@edf-er.com  
Peter.mccusker@edf-er.com  
simonp@smchse.com  
ian@mhwpr.co.uk  
david.hailes@ore.catapult.org.uk  
jonathan.hughes@ore.catapult.org.uk