

Notice to Mariners No 3 / 2017

Project: Blyth Offshore Demonstrator Project
 Date: 19th June 2017
 Document number: BOD-107-04-BAM-NTM-00003-A-01
 Date start Works: 21th of June 2017 (on or about, awaiting a favorable weather window)

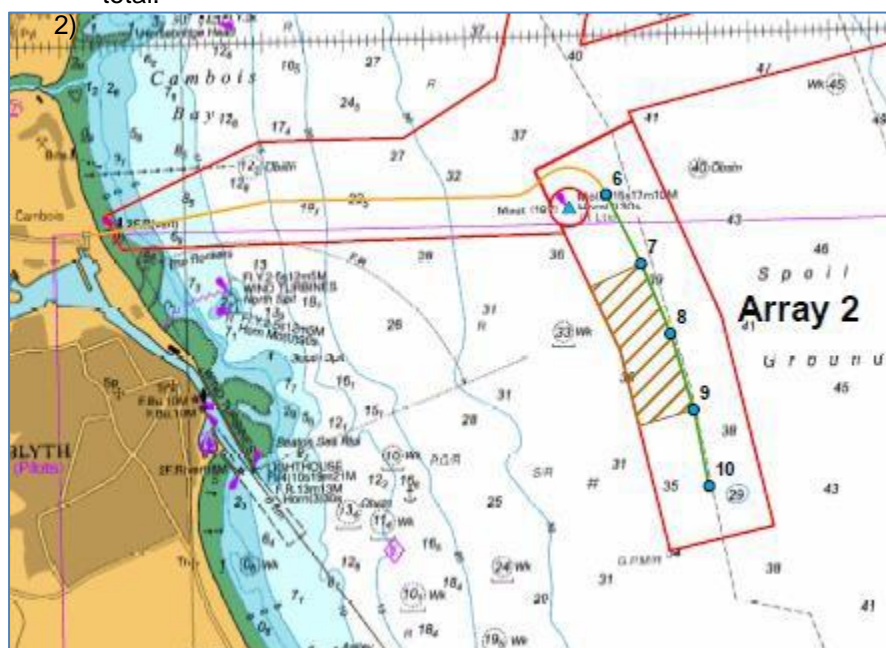
1) Pre-Survey – Dredge works

The anticipated works are to undertake a pre-survey of the foundation areas for the five turbines using a multibeam echosounder installed on the survey vessel the Deep Volans. Awaiting favorable weather window, the schedule for the works is as follows:

- 21-06-2017: 2 days operation (conducting the survey) – day operations (07:00 – 19:00hrs)
- 23-06-2017: Demobilization

The works will not involve any towed equipment. The survey areas include the following:

- 1) 250 meters radius centered around each of the five turbine locations numbered 6 – 10 below (5 locations in total).



Turbine 6	55°08.8702'	001°24.7913'
Turbine 7	55°08.3793'	001°24.3781'
Turbine 8	55°07.8805'	001°24.0344'
Turbine 9	55°07.3406'	001°23.7706'
Turbine 10	55°06.7974'	001°23.6067'

It is requested that any static gear surface markers are removed from the survey areas and all mariners are requested to maintain a minimum 500m safety zone around each turbine location and from the survey vessel.

2) Fisheries Liaison Contact:

Simon Prince – Fisheries Liaison Co-ordinator
 Specialist Marine Consultants Ltd
 +44 (0) 7920 273866
 Email:simonp@smchse.com

3) Vessel master and details

Vessel master: Thijs Bosma
 Vessel details: The vessel used for the Pre-Survey is as follows:

SURVEY VESSEL VOLANS **SPECIFICATION SHEET**

DEEP BV
 Johan van Hasseltweg 39D
 1021 KN Amsterdam
 T: +31-20-6343676
 WWW.DEEPBV.NL

deep
 Hydrography & Geophysics



Multi-purpose survey vessel 'Volans'

The Volans is a purpose built hydrographic survey vessel. The vessel can be deployed for various projects related to hydrographic, geophysical and environmental surveys.

The vessel is fitted with the latest equipment to carry out complex surveys in remote areas.

With her standard equipped moonpools and brackets the vessel fits all needs for multi-disciplinary surveys like sub-sea cable detection, offshore site-surveys, environmental surveys and UXO detection for offshore wind farms.

Vessel Features and Capabilities

- 12-hours a day operational
- Accommodation for 8 persons and 2 crew
- Interchangeable bow fender
- Flexible survey setup (2 moonpools)
- Equipped for:
 - Site Investigations
 - Route surveys
 - UXO surveys
 - Seismic surveys

SURVEY VESSEL VOLANS

SPECIFICATION SHEET

DEEP BV
 Johan van Hasseltweg 39D
 1021 KN Amsterdam
 T: +31-20-6343676
 WWW.DEEPBV.NL



General vessel information

Ship name	Volans
Type	Crew Cat 48
Owner	Deep BV
Operator	Deep BV
Builder	Alloyboats
Classification	MCA Cat 2 60 mile
Flag	British

Survey equipment

GPS	Novatel or Trimble RTK
MRU/Gyro	Ixblue Octans 4
MBES	R2Sonic 2024
SBES	Navisound 210
Sound velocity	Navitronics SVP-15
Geophysics	Various systems

Main characteristics

Length O.A.	14.70 meter
Breadth	6.20 meter
Draft	1.20 meter
Gross Tonnage	14.46
Maximum speed	22 knts
Cruising speed	18 knts
Electrical systems	6.5 and 10.7 KVA 240 V. AC 50 HZ.

Machinery

Engines	2x Catterpillar C9
Output	510 BHP
Propulsion	Twin screw fixed pitch propellers
Bollard pull/push	5.5 Tons

Fuel consumption

Transit speed	95 L/hour
Survey speed	40 L/hour
Fuel Tank capacity	2500 liters
Water Tank capacity	500 liters

