



Notice to Marine Users 2017 Teesside Offshore Wind Farm

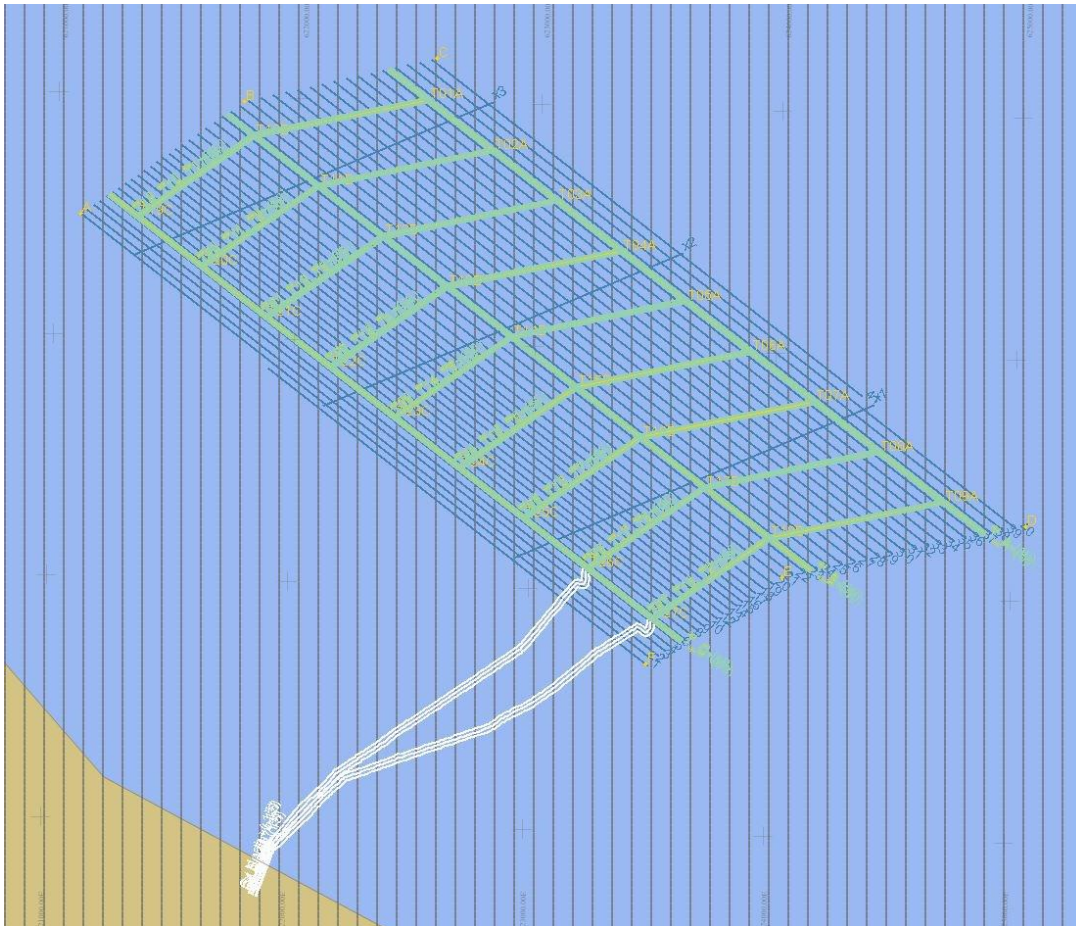
21st July 2017

Important Notice to All Marine Users

Geophysical Survey

A geophysical survey programme is planned to commence within the boundaries of the Teesside Offshore Wind Farm on the 26th July (weather dependant) or up to 30th July. The works will involve the vessel Proteus of Liverpool undertaking four surveys multi-beam, side scan sonar, Sub-bottom profile and Magnetometer surveys within the Wind farm. **(Chart1)**. Fishermen are advised to liaise directly with EDF –ER Marine coordination based at Teesside.

Chart 1: Line Plan of Geophysical Survey



The Proteus will be conducting surveys within the turbine arrays and export cable corridor only.



Notice to Marine Users 2017 Teesside Offshore Wind Farm

21st July 2017

Vessel Details

Vessel name:	Proteus of Liverpool
Call Sign:	2HBL7
Contact Details	Proteus@bibbyhydromap.com
Scope of Works	Geophysical– Multi-beam and Side scan Sonar AND Profile Pinger.
Duration	5 Day (weather permitting)
Operational Parameters	Vessel will be conducting 12 hour operations during daylight hours.



Graham Howarth

Access Control Technician -
Teesside

graham.howarth@edf-er.com

EDF EN Services UK
Teesside Windfarm Ltd

Greenland Road

PD Ports

Hartlepool

TS24 0RQ

Mob: +44 (0)7875 113418

