

# Notice to Mariners



**Hornsea**  
Offshore Wind Farm Project One

## NOTICE TO MARINERS - HORNSEA ONE PROJECT ONE Boulder Clearance

**Hornsea Project One – Notice to Mariners January 2018. Issued 26/01/2018 – Update 3**

### 1. INTRODUCTION

Mariners are advised that Hornsea Project One will be continuing offshore boulder clearance works in the offshore export cable corridor and the wind farm array. Hornsea Project One Offshore Wind Farm is located within the UK Sector of the North Sea off the coast of East Yorkshire. Works commenced 7 September 2017. Works will continue with **MV Atlantic Explorer** from circa **26 January 2018**.

The works will include undertaking boulder clearance activities along the export cable, inter-link cables and inter array cables.

### 2. SAFETY

It is requested that anybody having knowledge of any potential objects submerged or moored on the seabed, within the area or operations, that could be damaged or form a hazard to the works vessel and its equipment advises the Project’s Fishing Industry Liaison of their position and nature.

When works commence a listening watch will be maintained on VHF Channel 12 and 16 when within the appropriate port authority area, and will actively transmit an AIS signal. The works vessel will also broadcast at regular daily intervals, vessel position, operational information and intentions.

### 3. IMMEDIATE CONTACTS

The contents of this notice are based upon our current understanding of Project One requirements. A further notice will be issued with any further updates. Enquiries regarding the contents of this Notice to Mariners or any other matters should be directed to:

Export Cable Boulder Clearance Works		
<b>Project Manager</b> <b>Tideway Offshore Solutions</b>	<b>Ken Swaegers</b>	
Tel: +31 76 206 50 23	Mob: +32 470 89 55 35	E-mail: <a href="mailto:Swaegers.Ken@deme-group.com">Swaegers.Ken@deme-group.com</a>

### 4. FISHERIES LIAISON

Project One Onshore Fisheries Liaison is provided by Nick Garside and Jake Laws and can be contacted on:

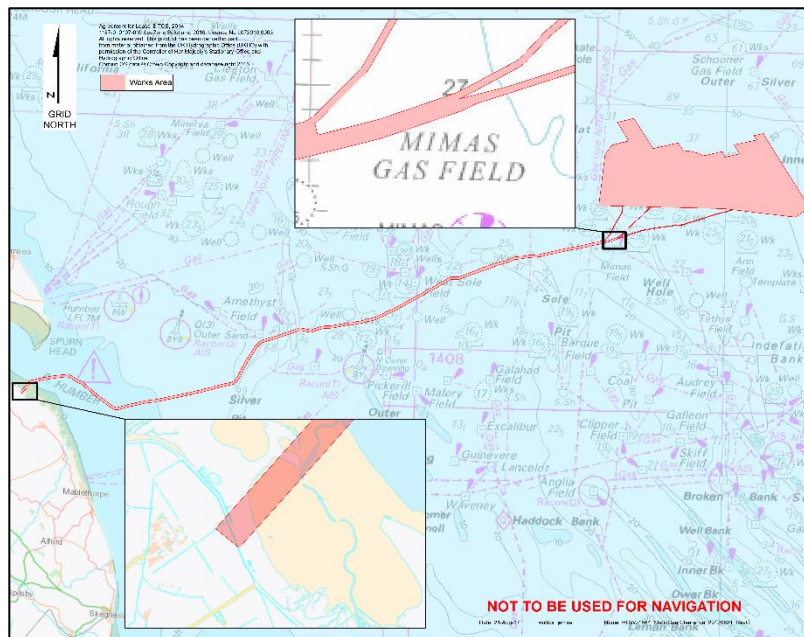
Mob: +44 (0) 7538 827 013      Email: [nick.garside@live.co.uk](mailto:nick.garside@live.co.uk)

Prepared      Bronagh Byrne, 26 January 2018  
Accepted      Bronagh Byrne, 26 January 2018  
Approved      Bronagh Byrne, 26 January 2018  
Doc. no.      \_0006817\_A

Mob: +44 (0) 7760 160 039 Email: [alex@brownmay.com](mailto:alex@brownmay.com)

## 5. OPERATIONS

Activities will centre on the Hornsea Project One wind farm array and offshore export cable corridor.



The works vessels will be deployed to offshore locations within the wind farm array and export cable corridor at times and positions determined by project requirements, weather and sea conditions.

The operations will commence on or about the **26 January 2018** with **MV Atlantic Explorer**. The work vessels will be deploying boulder clearance equipment and this will restrict their ability to manoeuvre. It will be requested that all vessels operating within the area keep a safe distance (500m) and pass at minimum speed to reduce vessel wash.

Please be advised that **Tideway** will be carrying out the operations with the **MV Atlantic Explorer**.


Operations will be conducted on a 24 hour basis. Throughout operations the vessels will be displaying the shapes and lights prescribed in the International Rules for the Prevention of Collisions at Sea (COLREGS) Rule 27. Displaying the prescribed shapes and lights when the vessel is restricted in its ability to manoeuvre.

## 6. VESSELS

Works will be conducted by the vessel **MV Atlantic Explorer**, whose details are provided below. Contact can be made directly with the vessels using the contact details listed below. Project contact details are provided in Section 3 of this NTM.

Vessel Contact Details (MV Atlantic Explorer)	
Bridge	+44 1273 311 671
Inmarsat Bridge	+870 764 805 232
Captain	+44 7769 200 264
Email	explorer@atlantic-marine.co.uk

General Information (MV Atlantic Explorer)	
Name	S.V. Atlantic Explorer
Flag	Panama

<b>Year Built</b>	1980
<b>IMO Number</b>	7924255
<b>Call Sign</b>	HO 4383
<b>Class</b>	P.O.R. Panama
	
Dimensions	
<b>Length</b>	70.57 metres
<b>Beam</b>	11.9 metres
<b>Draught</b>	5.22 metres
<b>Gross Tonnage</b>	1420 tonnes

## 7. DISTRIBUTION LIST

This NTM will also be distributed to the relevant local MMO offices, local IFCA's NFFO, Rederscentrale, HFIG, Danish Fishermen's Association, EEFPO and VisNed.

ABP Ports	<a href="mailto:cjefferson@abports.co.uk">cjefferson@abports.co.uk</a> ; <a href="mailto:afirman@abports.co.uk">afirman@abports.co.uk</a> ; <a href="mailto:hesvts@abports.co.uk">hesvts@abports.co.uk</a> ;
BP	<a href="mailto:Andrew.Steele@uk.bp.com">Andrew.Steele@uk.bp.com</a> ; <a href="mailto:sandra.turin@uk.bp.com">sandra.turin@uk.bp.com</a> ; <a href="mailto:bickft@bp.com">bickft@bp.com</a> ;
CEFAS	<a href="mailto:jon.rees@cefass.co.uk">jon.rees@cefass.co.uk</a> ; <a href="mailto:Keith.Cooper@cefass.co.uk">Keith.Cooper@cefass.co.uk</a> ;
Centrica	<a href="mailto:Jurgen.joosten@centrica.com">Jurgen.joosten@centrica.com</a> ;
Conoco Phillips	<a href="mailto:Karen.Morrison@conocophillips.com">Karen.Morrison@conocophillips.com</a> ; <a href="mailto:Kingsley.Anunobi@contractor.conocophillips.com">Kingsley.Anunobi@contractor.conocophillips.com</a> ; <a href="mailto:Susan.Mpaulo@conocophillips.com">Susan.Mpaulo@conocophillips.com</a> ; <a href="mailto:Stuart.C.Brookes@conocophillips.com">Stuart.C.Brookes@conocophillips.com</a> ; <a href="mailto:liam.R.williams@conocophillips.com">liam.R.williams@conocophillips.com</a> ;
The Crown Estate	<a href="mailto:Helen.Hallsworth@thecrownestate.co.uk">Helen.Hallsworth@thecrownestate.co.uk</a> ;
DBEIS	<a href="mailto:enquiries@BEIS.gov.uk">enquiries@BEIS.gov.uk</a> ;
DEFRA (Eastern Fisheries Inspectorate Lowestoft)	<a href="mailto:lowestoft@mfa.gsi.gov.uk">lowestoft@mfa.gsi.gov.uk</a> ;
DFDS	<a href="mailto:roy.kersey@dfds.com">roy.kersey@dfds.com</a> ;
DFDS	<a href="mailto:richard.berglarsen@dfds.com">richard.berglarsen@dfds.com</a> ;
DIO SD Trg-E Holbeach TSO (Lawrence, Christa Sqn Ldr)	<a href="mailto:DIOSDTrg-EHolbeachTSO@mod.uk">DIOSDTrg-EHolbeachTSO@mod.uk</a> ;
DNK-ATCSNCO2 (Philpot, Jonathan FS)	<a href="mailto:DNK-ATCSNCO2@mod.uk">DNK-ATCSNCO2@mod.uk</a> ;

Eastern IFCA	<a href="mailto:mail@eastern-ifca.gov.uk">mail@eastern-ifca.gov.uk</a> ;
East Port UK	<a href="mailto:harbouroffice@eastportuk.co.uk">harbouroffice@eastportuk.co.uk</a> ;
East Riding Council	<a href="mailto:david.mccandless@eastriding.gov.uk">david.mccandless@eastriding.gov.uk</a> ;
ENGIE	<a href="mailto:Pierre.girard@gdfsuezep.co.uk">Pierre.girard@gdfsuezep.co.uk</a> ;
HM Coastguard	<a href="mailto:zone8@hmcg.gov.uk">zone8@hmcg.gov.uk</a> ; <a href="mailto:zone9@hmcg.gov.uk">zone9@hmcg.gov.uk</a> ;
HOW01 - Fisheries Liaison Officer (Onshore)	<a href="mailto:nick.garside@live.co.uk">nick.garside@live.co.uk</a> ;
HOW02	<a href="mailto:SATHO@dongenergy.co.uk">SATHO@dongenergy.co.uk</a> ;
HOW03	<a href="mailto:FELBR@dongenergy.co.uk">FELBR@dongenergy.co.uk</a> ;
Ineos	<a href="mailto:phillip.jones@ineos.com">phillip.jones@ineos.com</a> ; <a href="mailto:mark.yates@ineos.com">mark.yates@ineos.com</a> ; <a href="mailto:Andrew.Mann@ineos.com">Andrew.Mann@ineos.com</a> ;
Kingfisher Information Services	<a href="mailto:kingfisher@seafish.co.uk">kingfisher@seafish.co.uk</a> ;
MCA	<a href="mailto:Peter.lowson@mcga.gov.uk">Peter.lowson@mcga.gov.uk</a> ;
MCA (Navigation Safety)	<a href="mailto:navigationsafety@mcga.gov.uk">navigationsafety@mcga.gov.uk</a> ;
MCA Offshore Renewable Energy Advisor	<a href="mailto:nick.salter@mcga.gov.uk">nick.salter@mcga.gov.uk</a> ;
MCA Yarmouth	<a href="mailto:Wm.yarmouth@mcga.gov.uk">Wm.yarmouth@mcga.gov.uk</a> ;
Marine Management Organisation	<a href="mailto:alan.qibson@marinemanagement.org.uk">alan.qibson@marinemanagement.org.uk</a> ;
Marine Management Organisation	<a href="mailto:marine.consents@marinemanagement.org.uk">marine.consents@marinemanagement.org.uk</a> ;
Marine Management Organisation (Grimsby)	<a href="mailto:grimsby@marinemanagement.org.uk">grimsby@marinemanagement.org.uk</a> ;
Marine Management Organisation (Harwich)	<a href="mailto:harwich@marinemanagement.org.uk">harwich@marinemanagement.org.uk</a> ;
Marine Management Organisation (Lowestoft)	<a href="mailto:lowestoft@marinemanagement.org.uk">lowestoft@marinemanagement.org.uk</a> ;
Marine Management Organisation (North Shields)	<a href="mailto:northshields@marinemanagement.org.uk">northshields@marinemanagement.org.uk</a> ;
National Federation of Fishermen's Organisations	<a href="mailto:nffo@nffo.org.uk">nffo@nffo.org.uk</a> ;
National Grid	<a href="mailto:Daniel.James@nationalgrid.com">Daniel.James@nationalgrid.com</a> ;
North Eastern IFCA	<a href="mailto:ne-ifca@eastriding.gov.uk">ne-ifca@eastriding.gov.uk</a> ;
North IFCA	<a href="mailto:nifca@nifca.gov.uk">nifca@nifca.gov.uk</a> ;
Perenco	<a href="mailto:asanders@uk.perenco.com">asanders@uk.perenco.com</a> ;
Port of Boston	<a href="mailto:rwalker@portofboston.co.uk">rwalker@portofboston.co.uk</a> ;
P&O Ferries	<a href="mailto:grant.laversuch@poferries.com">grant.laversuch@poferries.com</a> ; <a href="mailto:captain.po.york@poferries.com">captain.po.york@poferries.com</a> ; <a href="mailto:captain.po.hull@poferries.com">captain.po.hull@poferries.com</a> ; <a href="mailto:captain.po.rotterdam@poferries.com">captain.po.rotterdam@poferries.com</a> ; <a href="mailto:captain.po.bruges@poferries.com">captain.po.bruges@poferries.com</a> ;
Premier Oil	<a href="mailto:rarmstrong@PREMIER-OIL.com">rarmstrong@PREMIER-OIL.com</a> ; <a href="mailto:lwest@PREMIER-OIL.com">lwest@PREMIER-OIL.com</a> ; <a href="mailto:daridgway@PREMIER-OIL.com">daridgway@PREMIER-OIL.com</a> ;
RNLI (Flamborough Lifeboat)	<a href="mailto:flamborough@rnli.org.uk">flamborough@rnli.org.uk</a> ;
RNLI (Skegness Lifeboat Station)	<a href="mailto:Skegness@rnli.org.uk">Skegness@rnli.org.uk</a> ;
RNLI (Scarborough Lifeboat)	<a href="mailto:scarborough@rnli.org.uk">scarborough@rnli.org.uk</a> ;
RNLI (Spurn Head)	<a href="mailto:humber@rnli.org.uk">humber@rnli.org.uk</a> ;
RNLI (Whitby Lifeboat)	<a href="mailto:whitby@rnli.org.uk">whitby@rnli.org.uk</a> ; <a href="mailto:coxswain@wellslifeboat.org">coxswain@wellslifeboat.org</a> ;
Shell	<a href="mailto:UKDCC-Supervisor@shell.com">UKDCC-Supervisor@shell.com</a> ; <a href="mailto:SUKEP-Marine-Services@shell.com">SUKEP-Marine-Services@shell.com</a> ; <a href="mailto:sandy.smith@shell.com">sandy.smith@shell.com</a> ;
Specialist Marine Services	<a href="mailto:simonp@smchse.com">simonp@smchse.com</a> ;
Trinity House Navigation	<a href="mailto:Navigation.directorate@thls.org">Navigation.directorate@thls.org</a> ; <a href="mailto:martin.thomas@thls.org">martin.thomas@thls.org</a> ;
Tullow Oil	<a href="mailto:ian.manners@tulloil.com">ian.manners@tulloil.com</a> ;
UKHO (HDC Files)	<a href="mailto:hdcfiles@ukho.gov.uk">hdcfiles@ukho.gov.uk</a> ;
UKHO (NTMs)	<a href="mailto:noticetomariners@ukho.gov.uk">noticetomariners@ukho.gov.uk</a> ; <a href="mailto:offshore.energy@ukho.gov.uk">offshore.energy@ukho.gov.uk</a> ;
UKHO (Navigational Warnings)	<a href="mailto:Navwarnings@btconnect.com">Navwarnings@btconnect.com</a> ;
Wells Harbour	<a href="mailto:harbouroffice@wellsharbour.co.uk">harbouroffice@wellsharbour.co.uk</a> ;