



# **NOTICE TO MARINERS - HORNSEA ONE PROJECT ONE Intertidal and Nearshore Export Cable Works**

**Hornsea Project One – Notice to Mariners April 2018. Issued 27/03/2018**

## **1. INTRODUCTION**

Mariners are advised that Hornsea Project One will be commencing the intertidal and nearshore export cable works along the offshore export cable corridor. Hornsea Project One Offshore Wind Farm is located within the UK Sector of the North Sea off the coast of East Yorkshire.

The intertidal and nearshore Export cable works will commence from **01 April 2018** in the area shown on the map below.

## **2. SAFETY**

It is requested that anybody having knowledge of any potential objects submerged or moored on the seabed, within the area of operations, that could be damaged or form a hazard to the works vessel and their equipment, advises the Projects Fishing Industry Liaison of their position and nature.

When works commence a listening watch will be maintained on VHF Channel 12 and 16 when within the appropriate port authority area, and will actively transmit an AIS signal. The vessels will also broadcast at regular daily intervals, vessel position, operational information and intentions.

## **3. IMMEDIATE CONTACTS**

The contents of this notice are based upon our current understanding of Project One requirements. A further notice will be issued with any further updates, as well as Weekly Notice of Operations throughout the Works. Enquiries regarding the contents of this Notice to Mariners or any other matters should be directed to:

<b>Intertidal and Nearshore Export Cable Works – VBMS</b>	
<b>VBMS Project Manager</b>	<b>Guy Lister</b>
Mob: +44 (0) 780 161 7526	E-mail: <a href="mailto:g.lister@vbms.com">g.lister@vbms.com</a>

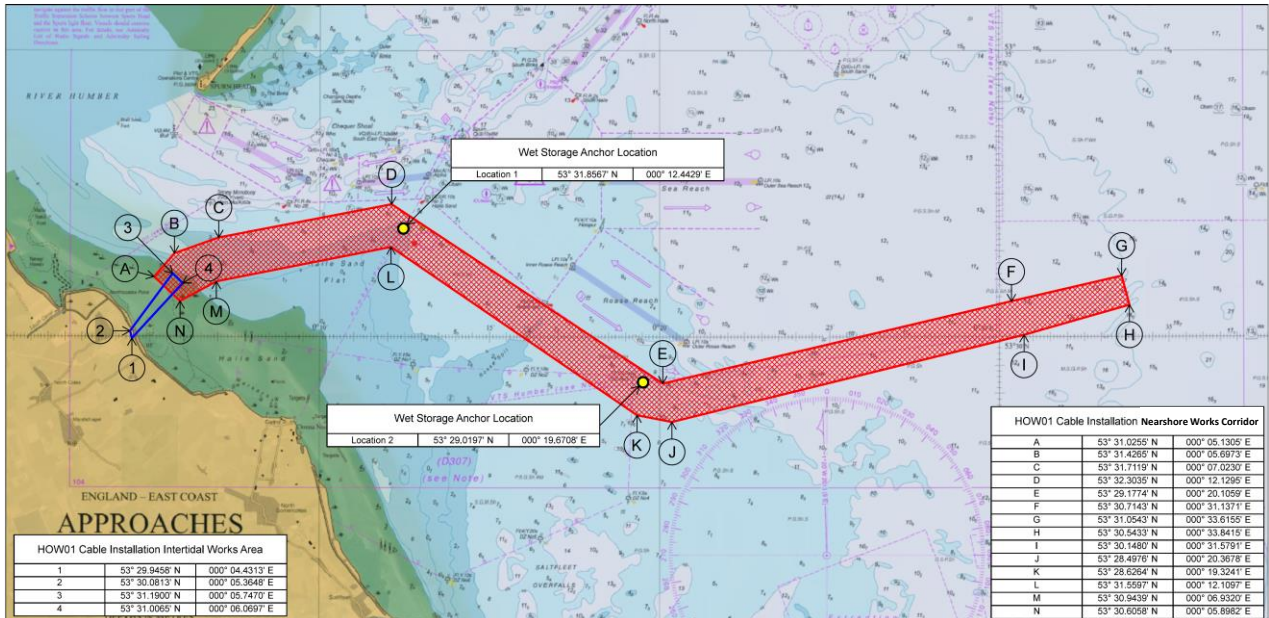
## **4. FISHERIES LIAISON**

Project One Onshore Fisheries Liaison is provided by Nick Garside and Alex Winrow-Giffin and can be contacted on:

Mob: +44 (0) 7538 827 013      Email: [nick.garside@live.co.uk](mailto:nick.garside@live.co.uk)  
Mob: +44 (0) 7760 160 039      Email: [alex@brownmay.com](mailto:alex@brownmay.com)

## 5. OPERATIONS

Activities will be in the section of the Hornsea Project One wind farm offshore export cable corridor as shown on the map below.



The vessels will be deployed to offshore locations within the export cable corridor, at times and positions determined by client requirements, weather and sea conditions.

The operations will commence on or about the **01 April 2018**. The exact finish date is dependent on the prevailing weather conditions, vessel downtime and work progress, but is anticipated to be August 2018.

Please be advised that **VBMS** will be carrying out Pre Lay Grapnel Run activities with **Sea Bravo** and **Ella F**, cable installation operations with the **Ndurance** and **Ella F**, and 2 barges will support operations **Haven Seariser 3** and **Stemat 88** alongside other workboats/ anchor handling tugs.

The vessels will be deploying grapnels and anchors, installing cables or assisting in these activities and this will restrict their ability to manoeuvre. It will be requested that all vessels operating within the area keep a safe distance (500m) and pass at minimum speed to reduce vessel wash.

Operations will be conducted on a 24 hour basis. Throughout operations the vessels will be displaying the shapes and lights prescribed in the International Rules for the Prevention of Collisions at Sea (COLREGS) Rule 27. Displaying the prescribed shapes and lights when the vessel is restricted in its ability to manoeuvre.

Vessel Contact Details (Sea Bravo)	
V-Sat Bridge	+31850090593
Immarsat Bridge	n/a
V-Sat Captain	n/a
Email	<a href="mailto:seabravo@seacontractors.com">seabravo@seacontractors.com</a>

General Information (Sea Bravo)	
Name	Sea Bravo
Flag	Dutch
Year Built	2008

<b>IMO Number</b>	9487029
<b>Call Sign</b>	PHSB
<b>Class</b>	Tug



Dimensions	
<b>Length</b>	32.08m
<b>Beam</b>	9.10m
<b>Draught</b>	3.2m
<b>Gross Tonnage</b>	327 tonnes

Vessel Contact Details (Ndurance)	
<b>V-Sat Bridge</b>	+3117130548
<b>Immarsat Bridge</b>	+870773167594
<b>V-Sat Captain</b>	+31107130550
<b>Email</b>	<a href="mailto:NDURANCE-CAPTAIN@boskalis.com">NDURANCE-CAPTAIN@boskalis.com</a>

General Information (Ndurance)	
<b>Name</b>	Ndurance
<b>Flag</b>	Cyprus
<b>Year Built</b>	2013
<b>IMO Number</b>	9632466
<b>Call Sign</b>	5BVH3
<b>Class</b>	Cable Lay Vessel



Dimensions	
Length	99.00m
Beam	30.00m
Draught	4.8m
Gross Tonnage	7417 tonnes

Vessel Contact Details (Ella F)	
V-Sat Bridge	+31852086129
Immarsat Bridge	n/a
V-Sat Captain	n/a
Email	<a href="mailto:ellaf@gssplant.nl">ellaf@gssplant.nl</a>

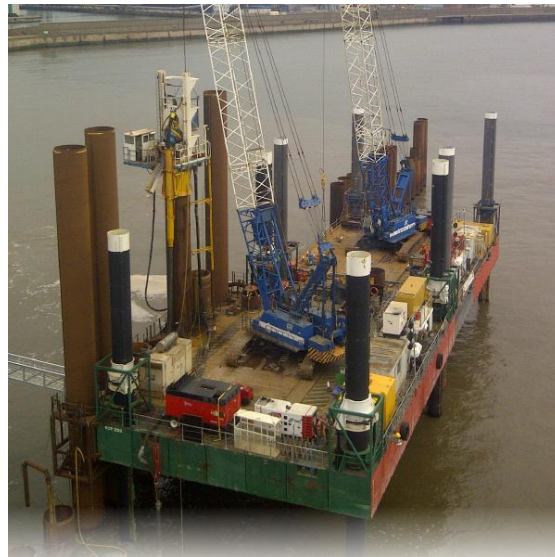
General Information (Ella F)	
Name	Ella F
Flag	Netherlands
Year Built	2017
IMO Number	9813498
Call Sign	PBMN
Class	Tug



Dimensions	
Length	37.40m
Beam	15.00m
Draught	1.9m
Gross Tonnage	496 tonnes

Barge Contact Details (Haven Seariser 3)	
V-Sat Bridge	n/a
Immarsat Bridge	n/a
V-Sat Captain	n/a
Email	e.griffioen@vbms.com

General Information (Haven Seariser 3)	
Name	Haven Seariser 3
Flag	No flag
Year Built	2012
IMO Number	n/a
Call Sign	n/a
Class	Barge



Dimensions	
Length	29.26m
Beam	17.07m
Draught	2.44m
Gross Tonnage	314 tonnes

Vessel Contact Details (Stemat 88)	
V-Sat Bridge	n/a
Immarsat Bridge	n/a
V-Sat Captain	n/a
Email	e.griffioen@vbms.com

General Information (Stemat 88)	
Name	Stemat 88
Flag	Netherlands
Year Built	2009
IMO Number	n/a
Call Sign	n/a
Class	Barge



Dimensions	
Length	50.0m
Beam	18.8m
Draught	2.322m
Gross Tonnage	739 tonnes

## 6. DISTRIBUTION LIST

This NTM will also be distributed to the relevant local MMO offices, local IFCA's NFFO, Rederscentrale, HFIG, Danish Fishermen's Association, EEFPO and VisNed.

ABP Ports	<a href="mailto:cjefferson@abports.co.uk">cjefferson@abports.co.uk</a> ; <a href="mailto:afirman@abports.co.uk">afirman@abports.co.uk</a> ; <a href="mailto:hesvts@abports.co.uk">hesvts@abports.co.uk</a> ; <a href="mailto:GCudbertson@abports.co.uk">GCudbertson@abports.co.uk</a>
BP	<a href="mailto:Andrew.Steele@uk.bp.com">Andrew.Steele@uk.bp.com</a> ; <a href="mailto:sandra.turin@uk.bp.com">sandra.turin@uk.bp.com</a> ;
CAA	<a href="mailto:AROps@caa.co.uk">AROps@caa.co.uk</a>
CEFAS	<a href="mailto:jon.rees@cefass.co.uk">jon.rees@cefass.co.uk</a> ; <a href="mailto:Keith.Cooper@cefass.co.uk">Keith.Cooper@cefass.co.uk</a> ;
Centrica	<a href="mailto:john.watson1@centrica.com">john.watson1@centrica.com</a> ; <a href="mailto:max.rowe@centrica.com">max.rowe@centrica.com</a> ;
Conoco Phillips	<a href="mailto:Karen.Morrison@conocophillips.com">Karen.Morrison@conocophillips.com</a> ; <a href="mailto:Kingsley.Anunobi@contractor.conocophillips.com">Kingsley.Anunobi@contractor.conocophillips.com</a> ; <a href="mailto:Susan.Mpaulo@conocophillips.com">Susan.Mpaulo@conocophillips.com</a> ; <a href="mailto:Stuart.C.Brookes@conocophillips.com">Stuart.C.Brookes@conocophillips.com</a> ; <a href="mailto:liam.R.williams@conocophillips.com">liam.R.williams@conocophillips.com</a> ; <a href="mailto:LogisticsMarineUK@conocophillips.com">LogisticsMarineUK@conocophillips.com</a> ; <a href="mailto:Richard.Pierce@contractor.conocophillips.com">Richard.Pierce@contractor.conocophillips.com</a> ; <a href="mailto:RSCLogisticsMarineController@conocophillips.com">RSCLogisticsMarineController@conocophillips.com</a>
The Crown Estate	<a href="mailto:Helen.Hallsworth@thecrownestate.co.uk">Helen.Hallsworth@thecrownestate.co.uk</a> ;
DBEIS	<a href="mailto:enquiries@BEIS.gov.uk">enquiries@BEIS.gov.uk</a> ;
DEFRA (Eastern Fisheries Inspectorate Lowestoft)	<a href="mailto:lowestoft@mfa.gsi.gov.uk">lowestoft@mfa.gsi.gov.uk</a> ;
DFDS	<a href="mailto:roy.kersey@dfds.com">roy.kersey@dfds.com</a> ;
DFDS	<a href="mailto:richard.berglarsen@dfds.com">richard.berglarsen@dfds.com</a> ;
DIO SD Trg-E Holbeach TSO (Lawrence, Christa Sqn Ldr)	<a href="mailto:DIOSDTrg-EHolbeachTSO@mod.uk">DIOSDTrg-EHolbeachTSO@mod.uk</a> ;
DNK-ATCSNCO2 (Philpot, Jonathan FS)	<a href="mailto:DNK-ATCSNCO2@mod.uk">DNK-ATCSNCO2@mod.uk</a> ;
Eastern IFCA	<a href="mailto:mail@eastern-ifca.gov.uk">mail@eastern-ifca.gov.uk</a> ;
East Port UK	<a href="mailto:harbouroffice@eastportuk.co.uk">harbouroffice@eastportuk.co.uk</a> ;
East Riding Council	<a href="mailto:david.mccandless@eastriding.gov.uk">david.mccandless@eastriding.gov.uk</a> ;
ENGIE	<a href="mailto:Pierre.qirard@gdfsuezep.co.uk">Pierre.qirard@gdfsuezep.co.uk</a> ;
HM Coastguard	<a href="mailto:zone8@hmcg.gov.uk">zone8@hmcg.gov.uk</a> ;

	<a href="mailto:zone9@hmcg.gov.uk">zone9@hmcg.gov.uk</a> ;
HOW01 - Fisheries Liaison Officer (Onshore)	<a href="mailto:nick.garside@live.co.uk">nick.garside@live.co.uk</a> ;
HOW01	<a href="mailto:ADETR@orsted.co.uk">ADETR@orsted.co.uk</a> ; <a href="mailto:brybr@orsted.co.uk">brybr@orsted.co.uk</a> ; <a href="mailto:STHOO@orsted.co.uk">STHOO@orsted.co.uk</a> ; <a href="mailto:OLEJU@orsted.dk">OLEJU@orsted.dk</a> ; <a href="mailto:MHCC_HOW01_ADM@orsted.co.uk">MHCC_HOW01_ADM@orsted.co.uk</a> ; <a href="mailto:HOW01-SCC-CM@orsted.dk">HOW01-SCC-CM@orsted.dk</a> ; <a href="mailto:XSKEL@orsted.co.uk">XSKEL@orsted.co.uk</a> ; <a href="mailto:BESKE@orsted.co.uk">BESKE@orsted.co.uk</a> ; <a href="mailto:GORPO@orsted.co.uk">GORPO@orsted.co.uk</a> ; <a href="mailto:ADWHI@orsted.co.uk">ADWHI@orsted.co.uk</a>
HOW02	<a href="mailto:natlo@orsted.co.uk">natlo@orsted.co.uk</a>
HOW03	<a href="mailto:FELBR@dongenergy.co.uk">FELBR@dongenergy.co.uk</a> ;
Ineos	<a href="mailto:phillip.jones@ineos.com">phillip.jones@ineos.com</a> ; <a href="mailto:mark.yates@ineos.com">mark.yates@ineos.com</a> ; <a href="mailto:Andrew.Mann@ineos.com">Andrew.Mann@ineos.com</a> ;
Kingfisher Information Services	<a href="mailto:kingfisher@seafish.co.uk">kingfisher@seafish.co.uk</a> ;
MCA	<a href="mailto:Peter.lowson@mcga.gov.uk">Peter.lowson@mcga.gov.uk</a> ;
MCA (Navigation Safety)	<a href="mailto:navigationsafety@mcga.gov.uk">navigationsafety@mcga.gov.uk</a> ;
MCA Offshore Renewable Energy Advisor	<a href="mailto:nick.salter@mcga.gov.uk">nick.salter@mcga.gov.uk</a> ;
MCA Yarmouth	<a href="mailto:Wm.yarmouth@mcga.gov.uk">Wm.yarmouth@mcga.gov.uk</a> ;
Marine Management Organisation	<a href="mailto:alan.gibson@marinemanagement.org.uk">alan.gibson@marinemanagement.org.uk</a> ;
Marine Management Organisation	<a href="mailto:marine.consents@marinemanagement.org.uk">marine.consents@marinemanagement.org.uk</a> ;
Marine Management Organisation (Grimsby)	<a href="mailto:grimsby@marinemanagement.org.uk">grimsby@marinemanagement.org.uk</a> ;
Marine Management Organisation (Harwich)	<a href="mailto:harwich@marinemanagement.org.uk">harwich@marinemanagement.org.uk</a> ;
Marine Management Organisation (Lowestoft)	<a href="mailto:lowestoft@marinemanagement.org.uk">lowestoft@marinemanagement.org.uk</a> ;
Marine Management Organisation (North Shields)	<a href="mailto:northshields@marinemanagement.org.uk">northshields@marinemanagement.org.uk</a> ;
National Federation of Fishermen's Organisations	<a href="mailto:nffo@nffo.org.uk">nffo@nffo.org.uk</a> ;
National Grid	<a href="mailto:Daniel.James@nationalgrid.com">Daniel.James@nationalgrid.com</a> ;
North Eastern IFCA	<a href="mailto:ne-ifca@eastriding.gov.uk">ne-ifca@eastriding.gov.uk</a> ;
North IFCA	<a href="mailto:nifca@nifca.gov.uk">nifca@nifca.gov.uk</a> ;
Orsted	<a href="mailto:JULSA@orsted.co.uk">JULSA@orsted.co.uk</a> ; <a href="mailto:DHOLD@orsted.co.uk">DHOLD@orsted.co.uk</a> ; <a href="mailto:XJARP@orsted.co.uk">XJARP@orsted.co.uk</a> ;
Perenco	<a href="mailto:asanders@uk.perenco.com">asanders@uk.perenco.com</a> ;
Port of Boston	<a href="mailto:rwalker@portofboston.co.uk">rwalker@portofboston.co.uk</a> ;
P&O Ferries	<a href="mailto:grant.laversuch@poferries.com">grant.laversuch@poferries.com</a> ; <a href="mailto:captain.po.york@poferries.com">captain.po.york@poferries.com</a> ; <a href="mailto:captain.po.hull@poferries.com">captain.po.hull@poferries.com</a> ; <a href="mailto:captain.po.rotterdam@poferries.com">captain.po.rotterdam@poferries.com</a> ; <a href="mailto:captain.po.bruges@poferries.com">captain.po.bruges@poferries.com</a> ;
Premier Oil	<a href="mailto:ramstrong@PREMIER-OIL.com">ramstrong@PREMIER-OIL.com</a> ; <a href="mailto:lwest@PREMIER-OIL.com">lwest@PREMIER-OIL.com</a> ;
RNLI (Flamborough Lifeboat)	<a href="mailto:flamborough@rnli.org.uk">flamborough@rnli.org.uk</a> ;
RNLI (Skegness Lifeboat Station)	<a href="mailto:Skegness@rnli.org.uk">Skegness@rnli.org.uk</a> ;
RNLI (Scarborough Lifeboat)	<a href="mailto:scarborough@rnli.org.uk">scarborough@rnli.org.uk</a> ;
RNLI (Spurn Head)	<a href="mailto:humber@rnli.org.uk">humber@rnli.org.uk</a> ;
RNLI (Whitby Lifeboat)	<a href="mailto:whitby@rnli.org.uk">whitby@rnli.org.uk</a> ; <a href="mailto:coxswain@wellslifeboat.org">coxswain@wellslifeboat.org</a> ;
Shell	<a href="mailto:UKDCC-Supervisor@shell.com">UKDCC-Supervisor@shell.com</a> ; <a href="mailto:SUKEP-Marine-Services@shell.com">SUKEP-Marine-Services@shell.com</a> ; <a href="mailto:sandy.smith@shell.com">sandy.smith@shell.com</a> ;
Spirit Energy	<a href="mailto:mike.dobson@spirit-energy.com">mike.dobson@spirit-energy.com</a> <a href="mailto:john.watson@spirit-energy.com">john.watson@spirit-energy.com</a>
Specialist Marine Services	<a href="mailto:simonp@smchse.com">simonp@smchse.com</a> ;
Trinity House Navigation	<a href="mailto:Navigation.directorate@thls.org">Navigation.directorate@thls.org</a> ; <a href="mailto:martin.thomas@thls.org">martin.thomas@thls.org</a> ;
UKHO (HDC Files)	<a href="mailto:hdcfiles@ukho.gov.uk">hdcfiles@ukho.gov.uk</a> ;
UKHO (NTMs)	<a href="mailto:noticetomariners@ukho.gov.uk">noticetomariners@ukho.gov.uk</a> ; <a href="mailto:offshore.energy@ukho.gov.uk">offshore.energy@ukho.gov.uk</a> ;
UKHO (Navigational Warnings)	<a href="mailto:Navwarnings@btconnect.com">Navwarnings@btconnect.com</a> ;
Wells Harbour	<a href="mailto:harbouroffice@wellsharbour.co.uk">harbouroffice@wellsharbour.co.uk</a> ;