



NOTICE TO MARINERS - HORNSEA PROJECT ONE Deployment of Aids to Navigation

Hornsea Project One – Notice to Mariners September 2017. Issued 01/09/2017.

1. INTRODUCTION

Mariners are advised that Hornsea Project One are planning the deployment of a number of Aids to Navigation and two Wave Buoys (collectively referred to as 'the equipment'). The deployment locations are within the UK Sector of the North Sea off the coast of East Yorkshire as shown in the co-ordinates below.

The equipment will be deployed around and within the Project One wind farm and will be deployed for approximately 24 months from September 2017. The equipment will be located at the coordinates as provided within this Notice to Mariners. The estimated deployment dates are as follows:

- The equipment - Deployment September 2017 in two phases (phase 1: 15/09 & phase 2: 16/10)

The equipment will be deployed by a single vessel. Deployment will take 2-3 days on site. No scheduled maintenance is planned (unforeseen maintenance may be required).

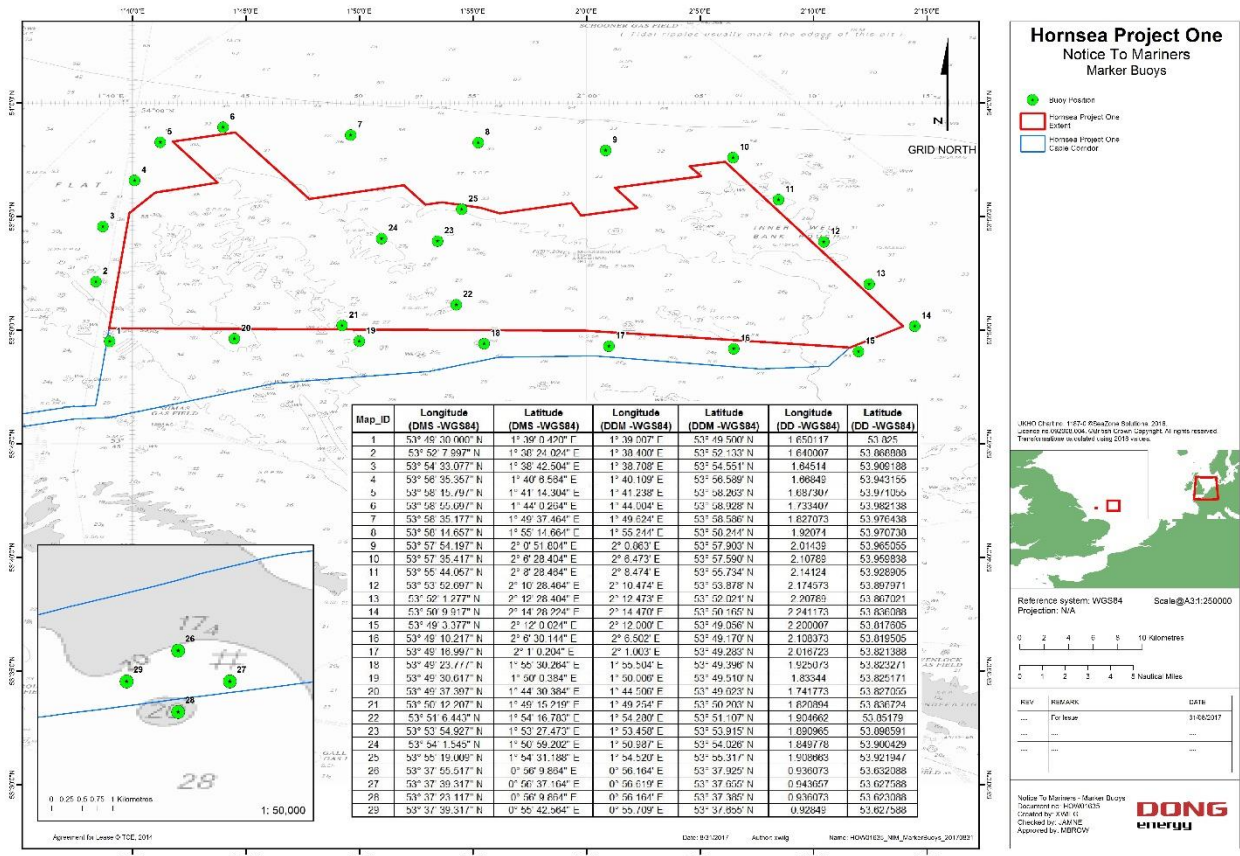
The mooring design is specific to each location. The equipment will be moored from a single vessel, through a combination of steel chains, rope and rubber cord and to cr.3300 kg clump weight at the seabed. The Wave buoy will have a mooring design comprising steel chains and combination steel rope with a cr.800 kg clump weight.

2. AREA OF OPERATIONS

The equipment will be located around the Hornsea Project One offshore Order Limits. The coordinates are:

Map ID	Longitude (DMS - WGS84)	Latitude (DMS - WGS84)	Map ID	Longitude (DMS - WGS84)	Latitude (DMS - WGS84)
1	1° 39' 0.444" E	53° 49' 50.000" N	16	2° 6' 30.144" E	53° 49' 10.217" N
2	1° 38' 24.024" E	53° 52' 7.997" N	17	2° 1' 0.204" E	53° 49' 16.997" N
3	1° 38' 42.504" E	53° 54' 33.077" N	18	1° 55' 30.264" E	53° 49' 23.777" N
4	1° 40' 6.564" E	53° 56' 35.357" N	19	1° 50' 0.384" E	53° 49' 30.617" N
5	1° 41' 14.304" E	53° 58' 15.797" N	20	1° 44' 30.384" E	53° 49' 37.397" N
6	1° 44' 0.264" E	53° 58' 55.697" N	21	1° 49' 15.219" E	53° 50' 12.207" N
7	1° 49' 37.464" E	53° 58' 35.177" N	22	1° 54' 16.783" E	53° 51' 6.443" N
8	1° 55' 14.664" E	53° 58' 14.657" N	23	1° 53' 27.473" E	53° 53' 54.927" N
9	2° 0' 51.804" E	53° 57' 54.197" N	24	1° 50' 59.202" E	53° 54' 1.545" N
10	2° 6' 28.404" E	53° 57' 35.417" N	25	1° 54' 31.188" E	53° 55' 19.009" N
11	2° 8' 28.464" E	53° 55' 44.057" N	26	0° 56' 9.864" E	53° 37' 55.517" N
12	2° 10' 28.464" E	53° 53' 52.697" N	27	0° 56' 37.164" E	53° 37' 39.317" N
13	2° 12' 28.404" E	53° 52' 1.277" N	28	0° 56' 9.864" E	53° 37' 23.117" N
14	2° 14' 28.224" E	53° 50' 9.917" N	29	0° 55' 42.564" E	53° 37' 39.317" N
15	2° 12' 0.024" E	53° 49' 3.377" N			
Phase 1			Phase 2		

3. OPERATIONS



3.1 Details

Please be advised that The Corporation of Trinity House are carrying out the operations with the MV Galatea. The vessel will be deploying the equipment, which will restrict their ability to manoeuvre. It will be requested that all vessels operating within the area keep a safe distance (500 m) and pass at minimum speed to reduce vessel wash. Operations will be conducted on a 24 hour basis. Throughout operations the vessels will be displaying the shapes and lights prescribed in the International Rules for the Prevention of Collisions at Sea (COLREGS) Rule 27. Displaying the prescribed shapes and lights when the vessel is restricted in its ability to manoeuvre.

3.2 Safety

Furthermore, it is requested that anybody having knowledge of any potential objects submerged or moored on the seabed, close to the deployment zone, that could be damaged or form a hazard to the vessel and its equipment advises the Projects Fishing Industry Liaison Officer of their position and nature. When operations commence, a listening watch will be maintained on VHF Channel 12 and 16 when within the appropriate port authority area, and will actively transmit an AIS signal. The vessels will also broadcast at regular daily intervals, vessel position, operational information and intentions.

4. IMMEDIATE CONTACTS

The contents of this notice are based upon our current understanding of Project One requirements. Enquiries regarding the contents of this Notice to Mariners or any other matters should be directed to:

Trinity House		
Project Manager	Bill Summers	
Tel: 01255 245136	Mob: 07786 028834	E-mail: bill.summers@thls.org

5. FISHERIES LIAISON

Project One Onshore Fisheries Liaison is provided for by Nick Garside and Brown and May Marine who can be contacted on:

Mob: +44 (0) 7538 827 013 Email: nick.garside@live.co.uk

Mob: +44 (0) 7841 860 752 Email: jake.laws@brownmay.com

6. VESSELS

Operations will be conducted by the MV Galatea whose details are provided below. Contact can be made directly with the vessels using the contact details listed below. Contractor contact details are provided in Section 4 of this NTM.

Vessel Contact Details - Galatea	
Bridge	07824 624383
Captain	Wayne Durrans (Phase1); Bob Culley (Phase 2)
V-Sat Bridge	0044 2033 569 832 or 0044 2033 569 833
Party Chief	07831 725157
Email	THV.Galatea@thls.org

General Information - Galatea	
Name	Galatea
Flag	United Kingdom
Year Built	2007
IMO Number	9338591
Call Sign	MRDQ7
Class	Lloyds



Dimensions	
Length	84,2 m

Beam	16,5 m
Draught	4,3 m
Gross Tonnage	3672

7. DISTRIBUTION LIST

This NTM will also be distributed to the relevant local MMO offices, local IFCA's NFFO, Rederscentrale, HFIG, Danish Fishermen's Association, EEFP0 and VisNed.

ABP Ports	cjefferson@abports.co.uk ; afirman@abports.co.uk ; hesvts@abports.co.uk ;
BP	Andrew.Steele@uk.bp.com ; sandra.turin@uk.bp.com ; bickft@bp.com ;
CEFAS	jon.rees@cefass.co.uk ; Keith.Cooper@cefass.co.uk ;
Centrica	Jurgen.joosten@centrica.com ;
Conoco Phillips	Karen.Morrison@conocophillips.com ; Kingsley.Anunobi@contractor.conocophillips.com ; Susan.Mpaulo@conocophillips.com ; Stuart.C.Brookes@conocophillips.com ; liam.R.williams@conocophillips.com ;
The Crown Estate	Helen.Hallsworth@thecrownestate.co.uk ;
DECC (now known as Department of Business, Energy and Industrial Strategy)	enquiries@BEIS.gov.uk ;
DEFRA (Eastern Fisheries Inspectorate Lowestoft)	lowestoft@mfa.gsi.gov.uk ;
DFDS	roy.kersey@dfds.com ;
DFDS	richard.berglarsen@dfds.com ;
DIO SD Trg-E Holbeach TSO (Lawrence, Christa Sqn Ldr)	DIOSDTrg-EHolbeachTSO@mod.uk ;
DNK-ATCSNCO2 (Philpot, Jonathan FS)	DNK-ATCSNCO2@mod.uk ;
Eastern IFCA	mail@eastern-ifca.gov.uk ;
East Port UK	harbouroffice@eastportuk.co.uk ;
East Riding Council	david.mccandless@eastriding.gov.uk ;
ENGIE	Pierre.qirard@gdfsuezep.co.uk ;
HM Coastguard	zone8@hmcg.gov.uk ; zone9@hmcg.gov.uk ;
HOW01 - Fisheries Liaison Officer (Onshore)	nick.garside@live.co.uk ;
HOW02	SATHO@dongenergy.co.uk ;
HOW03	FELBR@dongenergy.co.uk ;
Ineos	phillip.jones@ineos.com ; mark.yates@ineos.com ; Andrew.Mann@ineos.com ;
Kingfisher Information Services	kingfisher@seafish.co.uk ;
MCA	Peter.lowson@mcga.gov.uk
MCA (Navigation Safety)	navigationsafety@mcga.gov.uk ;
MCA Offshore Renewable Energy Advisor	nick.salter@mcga.gov.uk ;
MCA Yarmouth	Wm.yarmouth@mcga.gov.uk ;
Marine Management Organisation	alan.gibson@marinemanagement.org.uk ;
Marine Management Organisation	marine.consents@marinemanagement.org.uk ;
Marine Management Organisation (Grimsby)	grimsby@marinemanagement.org.uk ;
Marine Management Organisation (Harwich)	harwich@marinemanagement.org.uk ;
Marine Management Organisation (Lowestoft)	lowestoft@marinemanagement.org.uk ;
Marine Management Organisation (North Shields)	northshields@marinemanagement.org.uk ;
National Federation of Fishermen's Organisations	nffo@nffo.org.uk ;
National Grid	Daniel.James@nationalgrid.com ;
North Eastern IFCA	ne-ifca@eastriding.gov.uk ;

North IFCA	nifca@nifca.gov.uk ;
Perenco	asanders@uk.perenco.com ;
Port of Boston	rwalker@portofboston.co.uk ;
P&O Ferries	grant.laversuch@poferries.com ; captain.po.york@poferries.com ; captain.po.hull@poferries.com ; captain.po.rotterdam@poferries.com ; captain.po.bruges@poferries.com ;
Premier Oil	rarmstrong@PREMIER-OIL.com ; lwest@PREMIER-OIL.com ; daridgway@PREMIER-OIL.com ;
RNLI (Flamborough Lifeboat)	flamborough@rnli.org.uk ;
RNLI (Skegness Lifeboat Station)	Skegness@rnli.org.uk ;
RNLI (Scarborough Lifeboat)	scarborough@rnli.org.uk ;
RNLI (Spurn Head)	humber@rnli.org.uk ;
RNLI (Whitby Lifeboat)	whitby@rnli.org.uk ; coxswain@wellslifeboat.org ;
Shell	UKDCC-Supervisor@shell.com ; SUKEP-Marine-Services@shell.com ; sandy.smith@shell.com ; Tony.peetoom@shell.com ;
Specialist Marine Services	simonp@smchse.com ;
Trinity House Navigation	Navigation.directorate@thls.org ; martin.thomas@thls.org ;
Tullow Oil	ian.manners@tulloil.com ;
UKHO (HDC Files)	hdcfiles@ukho.gov.uk ;
UKHO (NTMs)	noticetomariners@ukho.gov.uk ; offshore.energy@ukho.gov.uk ; Ray.Paice@UKHO.gov.uk ;
UKHO (Navigational Warnings)	Navwarnings@btconnect.com ;
Wells Harbour	harbouroffice@wellsharbour.co.uk ;