



REPORT



Hornsea Project One Offshore Windfarm

Weekly Notice of Operations

For Week Commencing	08 January 2018
Notice Number	17
Issue Date:	08 January 2018

Prepared Benjamin Skelly (BESKE), 6 September 2017
Checked Benjamin Skelly (BESKE), 15 September 2017
Accepted Marc Browne (MBROW), 15 September 2017
Approved Ole Juulsgaard (OLEJU), 15 September 2017

Doc. no. 2919281
Ver. no. 2919281A
Case no. 200-15-0969

1.1 Ørsted Marine & Helicopter Co-ordination Centre

Routine enquiries (24 hours)	0044 (0) 207 811 1171
Emergency number (24 hours)	0044 (0) 207 811 1170
Email	MHCC_HOW01_ADM@orsted.co.uk

1.2 The UK main ports supporting current operations

Grimsby - Crew Transfer Vessels (CTV), light logistics (personnel, tools and equipment) & main vessel port logistics

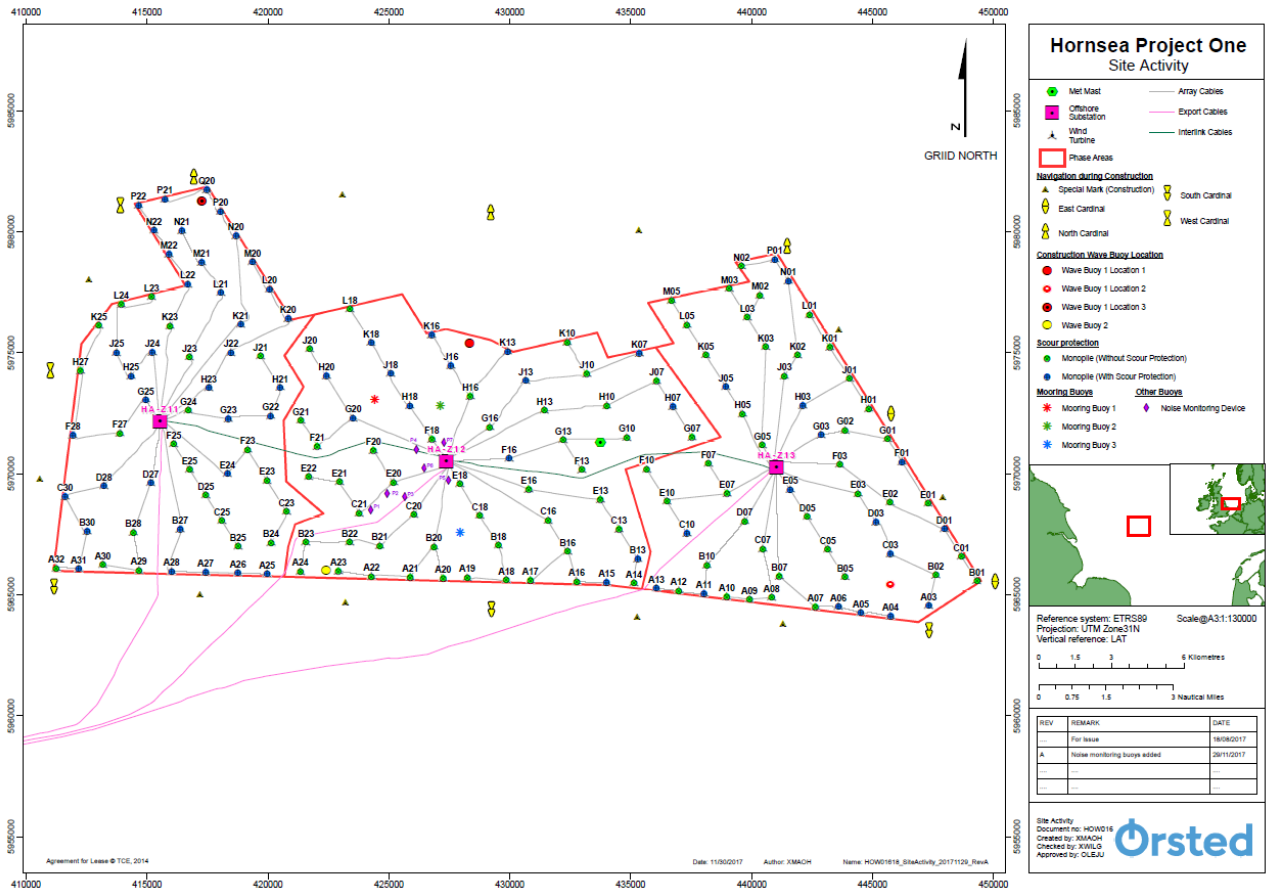
1.3 Safety Information

All vessels not involved in construction activities are requested to keep 500m distance from construction and dive vessels whilst transiting the area

All vessels should proceed with caution whilst navigating and/or working in the area and be aware of the statutory 50m safety zone around each fixed asset.

1.4 Site Boundary and Navigation Aids

The offshore site boundary for HOW01 is shown as below, and will be marked by standard IALA navigation marks. All buoys have been deployed as per below tables.



HOW01 Offshore Site Deployed demarcation buoys WGS84	
STATION	BROADCAST DETAILS
HOW01 DELTA	53° 49.170' N 002° 06.502' E CHARACTERISTICS: SPECIAL MARK, YELLOW PILLAR, YELLOW CROSS LIGHT:FL Y 5S
HOW01 ECHO	53° 49.283' N 002° 01.003' E CHARACTERISTICS: : SPECIAL MARK, YELLOW PILLAR, YELLOW CROSS LIGHT:FL Y 5S

HOW01 ALPHA	53° 57.903' N 002° 00.863' E CHARACTERISTICS: SPECIAL MARK, YELLOW PILLAR, YELLOW CROSS LIGHT: FL Y 5S
HOW01 BRAVO	53° 55.734' N 002° 08.474' E CHARACTERISTICS: SPECIAL MARK, YELLOW PILLAR, YELLOW CROSS LIGHT: FL Y 5S
HOW01 CHARLIE	53° 52.021' N 002° 12.474' E CHARACTERISTICS: SPECIAL MARK, YELLOW PILLAR, YELLOW CROSS LIGHT: FL Y 5S
HOW01 FOXTROT	53° 49.510' N 001° 50.006' E CHARACTERISTICS: SPECIAL MARK, YELLOW PILLAR, YELLOW CROSS LIGHT: FL Y 5S
HOW01 GOLF	53° 49.623' N 001° 44.506' E CHARACTERISTICS: SPECIAL MARK, YELLOW PILLAR, YELLOW CROSS LIGHT: FL Y 5S
HOW01 HOTEL	53° 52.133' N 001° 38.400' E CHARACTERISTICS: SPECIAL MARK, YELLOW PILLAR, YELLOW CROSS LIGHT: FL Y 5S
HOW01 INDIA	53° 56.589' N 001° 40.109' E CHARACTERISTICS: SPECIAL MARK, YELLOW PILLAR, YELLOW CROSS LIGHT: FL Y 5S
HOW01 JULIET	53° 58.586' N 001° 49.624' E CHARACTERISTICS: SPECIAL MARK, YELLOW PILLAR, YELLOW CROSS LIGHT: FL Y 5S
HOW01 WEST	53° 54.551' N 001° 38.708' E CHARACTERISTICS: WEST CARDINAL YELLOW BLACK YELLOW PILLAR, Q (9) 15s, 2 CONES APEX INWARDS

HOW01 WEST NORTH WEST	53° 58.263' N 001° 41.238' E CHARACTERISTICS: WEST CARDINAL YELLOW BLACK YELLOW PILLAR, VQ (9) 10s, 2 CONES APEX INWARDS
HOW01 SOUTH	53° 49.396' N 001° 55.504' E CHARACTERISTICS: SOUTH CARDINAL YELLOW OVER BLACK PILLAR: 2 CONES APEX DOWNWARDS LIGHT: Q (6) + 1L FL 15s
HOW01 SOUTH WEST	53° 49.500' N 001° 39.007' E CHARACTERISTICS: SOUTH CARDINAL YELLOW OVER BLACK PILLAR: 2 CONES APEX DOWNWARDS LIGHT: VQ (6) + 1L FL 10s
HOW01 NORTH WEST	53° 58.928' N 001° 44.004' E CHARACTERISTICS: NORTH CARDINAL, BLACK OVER YELLOW PILLAR, VQ, TOPMARK; 2 CONES APEX UPWARDS
HOW01 NORTH	53° 58.244' N 001° 55.244' E CHARACTERISTICS: NORTH CARDINAL, BLACK OVER YELLOW PILLAR, Q, TOPMARK; 2 CONES APEX UPWARDS
HOW01 NORTH EAST	53° 57.590' N 002° 06.473' E CHARACTERISTICS: NORTH CARDINAL, BLACK OVER YELLOW PILLAR, VQ, 2 CONES APEX UPWARDS
HOW01 EAST	53° 53.878' N 002° 10.474' E CHARACTERISTICS: EAST CARDINAL BLACK YELLOW BLACK PILLAR, Q(3) 10s, 2 CONES APEX OUTWARDS
HOW01 SOUTH EAST	53° 50.165' N 002° 14.470' E CHARACTERISTICS: EAST CARDINAL BLACK YELLOW BLACK PILLAR, VQ(3) 5s, 2 CONES APEX OUTWARDS
HOW01 SOUTH SOUTH EAST	53° 49.056' N 002° 12.000' E CHARACTERISTICS: SOUTH CARDINAL YELLOW OVER BLACK PILLAR, VQ (6) + L FL 10s, 2 CONES APEX DOWNWARDS

1.5 RCS Site

HOW01 RCS S	Type: South Cardinal Characteristics: VQ (6) +LFI 10s (White) Top Mark: South Day Mark: Yellow Black Racon: Tango Position: 53°37.385'N 000°56.164E
HOW01 RCS E	Type: East Cardinal Characteristics: VQ (3) 5s (White) Top Mark: East Day Mark: Black Yellow Black Position: 53°37.586'N 000°56.619'E
HOW01 RCS N	Type: North Cardinal Characteristics: VQ (White) Top Mark: North Day Mark: Black Yellow Position: 53°37.925'N 000°56.164'E
HOW01 RCS W	Type: West Cardinal Characteristics: VQ (9) 10s (White) Top Mark: West Day Mark: Yellow Black Yellow Position: 53°37.754'N 000°55.689'E

1.6 Mooring buoys

HOW01 MOORING 3	53° 51.107' N 001° 54.279' E CHARACTERISTICS: : SPECIAL MARK, YELLOW PILLAR, NO TOPMARK LIGHT:FL Y 5S
HOW01 MOORING 2	53° 53.915' N 001° 53.457' E CHARACTERISTICS: : SPECIAL MARK, YELLOW PILLAR, NO TOPMARK LIGHT:FL Y 5S
HOW01 MOORING 1	53° 54.025' N 001° 50.986' E CHARACTERISTICS: : SPECIAL MARK, YELLOW PILLAR, NO TOPMARK LIGHT:FL Y 5S

1.7 Wave Buoys

<p>HOW01 Wave 1</p>	<p>53° 55.316' N 001° 54.519' E CHARACTERISTICS: SPECIAL MARK YELLOW BOUY, Q (5) 20s – (YELLOW) TOPMARK; YELLOW CROSS</p>
<p>HOW01 Wave 2</p>	<p>53° 50.203' N 001° 49.253' E CHARACTERISTICS: SPECIAL MARK YELLOW BUOY: YELLOW CROSS LIGHT: Q (5) 20s (YELLOW)</p>

1.8 HOW01 Vessel Update

Below is a list of vessels working on the Hornsea One Project.

VCC – Vessel Clearance Certificate, this ensure all procedure have been followed to allow a vessel to begin operations.

1.8.1 Guard Vessels

Esvagt Castor

1.8.2 Project Vessels

Vessel Details		Summary of Vessel Communications				Work Schedule		Vessel Clearance Certificate	
Vessel Name	MMSI	Contact Number	E-mail	Type	Frequencies Monitored	Start/Arrival	Work Package	VCC Issued	VCC Number
Siem Ruby	2577330000	+47 47 48 16 59 +47 21 03 80 07	captain@ruby.siemoffshore.com	VHF	Ch. 16 & P1 @ 162.050 MHz	07-09-2017	Cables	09-09-2017	HOW01-VCC-001
Galatea	235054097	To follow	THV.galatea@thls.org	VHF	Ch. 16 & P1 @ 162.050 MHz	15-09-2017	Construction	15-09-2017	HOW01-VCC-002
Ginny Louise	235090162	To follow	To follow	VHF	Ch. 16 & P1 @ 162.050 MHz	18-09-2017	Measurements	19-09-2017	HOW01-VCC-003
Lange Wapper	205309000	To follow	Captain.LangeWapper@ships.demegroup.com	VHF	Ch. 16 & P1 @ 162.050 MHz	24-09-2017	Cables	24-09-2017	HOW01-VCC-004
Foryd Bay	235091157	+44 7817 688603 +88 1677 72 16 42	foryd.bay@onsatmail.com	VHF	Ch. 16 & P1 @ 162.050 MHz	26-09-2017	Cables	25-09-2017	HOW01-VCC-005
Noordhoek Pathfinder	245457000	To follow	esspathfinder@ecosse-subsea.com	VHF	Ch. 16 & P1 @ 162.050 MHz	08-10-2017	Cables	26-09-2017	HOW01-VCC-006
Smit Kamara	205454000	To follow	To follow	VHF	Ch. 16 & P1 @ 162.050 MHz	09-10-2017	Site Investigation	09-10-2017	HOW01-VCC-007
Sea Fox	235098651	To follow	enviroserveseafox@gmail.com	VHF	Ch. 16 & P1 @ 162.050 MHz	09-10-2017	Site Investigation	09-10-2017	HOW01-VCC-008
Esvagt Castor	2200030000	+45 616 267 74 +45 821 365 24	castor@esvagtvesel.com	VHF	Ch. 16 & P1 @ 162.050 MHz	24-10-2017	Construction	27-10-2017	HOW01-VCC-009
Eden Rose	235092732	To follow	edenrose@tidal-transit.com	VHF	Ch. 16 & P1 @ 162.050 MHz	07-11-2017	Construction	07-11-2017	HOW01-VCC-012
Atlantic Explorer	351407000	+44 7769 200264 +870 764 805232	master.explorer@atlantic-marine.co.uk	VHF	Ch. 16 & P1 @ 162.050 MHz	01-12-2017	Foundations	01-12-2017	HOW01-VCC-012
Svenja	211577000	To Follow	To follow	VHF	Ch. 16 & P1 @ 162.050 MHz	18-12-2017	Foundations	18-12-2017	HOW01-VCC-015
Seahorse	244137000	To follow	Seahorse-captain@deeprock.nl	VHF	Ch. 16 & P1 @ 162.050 MHz	11-12-2017	Foundations	11-12-2017	HOW01-VCC-014

1.9 Foundations Scour Protection, Monopiles (MP), Transition piece (TP) and Turbine Installation Progress

- Complete
- Not required

WTG ID	Foundation			Turbine			WTG ID	Foundation			Turbine		
	Scour	MP	TP	Tower	Nacelle	Blades		Scour	MP	TP	Tower	Nacelle	Blades
A03							B28						
A04							B30						
A05							C01						
A06							C03						
A07							C05						
A08							C07						
A09							C10						
A10							C13						
A11							C16						
A12							C18						
A13							C20						
A14							C21						
A15							C23						
A16							C25						
A17							C30						
A18							D01						
A19							D03						
A20							D05						
A21							D07						
A22							D25						
A23							D27						
A24							D28						
A25							E01						
A26							E02						
A27							E03						
A28							E05						
A29							E07						
A30							E10						
A31							E13						
A32							E16						
B01							E18						
B02							E20						
B05							E21						
B07							E22						
B10							E23						
B13							E24						
B16							E25						
B18							F01						
B20							F03						
B21							F07						
B22							F10						
B23							F13						
B24							F16						
B25							F18						
B27							F20						

WTG ID	Foundation			Turbine			WTG ID	Foundation			Turbine		
	Scour	MP	TP	Tower	Nacelle	Blades		Scour	MP	TP	Tower	Nacelle	Blades
F21							J22						
F23							J23						
F25							J24						
F27							J25						
F28							K01						
G01							K02						
G02							K03						
G03							K05						
G05							K07						
G07							K10						
G10							K13						
G13							K16						
G16							K18						
G20							K20						
G21							K21						
G22							K23						
G23							K25						
G24							L01						
G25							L03						
H01							L05						
H03							L18						
H05							L20						
H07							L21						
H10							L22						
H13							L23						
H16							L24						
H18							M02						
H20							M03						
H21							M05						
H23							M20						
H25							M21						
H27							M22						
J01							N01						
J03							N02						
J05							N20						
J07							N21						
J10							N22						
J13							P01						
J16							P20						
J18							P21						
J20							P22						
J21							Q20						

1.10 Cable Progress

1.11 Inter - Array Cable Status

Black: Designed Red: Laid Green: Cable Fully Buried Blue: Accepted

E03-D03 F03-E02 J01-H01 N01-P01 G02-G01 Z13-J03 H05-J05 J03-K02 K05-L05 L03-M03 L05-M05
K03-L03 E05-D05 G03-G02 Z13-G05 C03-B02 D01-C01 B02-A03 C01-B01 D05-C05 B10-A11
A12-A13 E10-C10 B07-A07 A08-A09 D07-B10 Z13-C07 Z13-E03 Z13-E05 Z13-D07 Z13-F03 L03-M02
E10-F10 B28-A29 Z13-E07 A11-A12 A09-A10 C07-A08 Z13-B07 A07-A06 A06-A05 A05-A04 C05-B05
E02-D01 Z13-G03 G01-F01 F01-E01 H03-J01 J01-K01 K01-L01 Z13-H03 K02-N01 P01-N02 G05-K03
J05-K05 Z13-H05 D03-C03 E07-F07 E07-E10 B30-A31 D27-B28 A28-A27 A27-A26 A26-A25 D25-C25
E25-D25 F25-E25 F23-E23 E23-C23 H21-J21 B27-A28 A31-A32 D28-C30 C30-B30 C23-B24 G24-G23
A29-A30 E24-F23 G23-G22 C25-B25 G22-H21 Z12-H16 H16-J16 H16-K13 J16-K16 Z12-G16 G16-J13
J10-K07 J10-K10 J13-J10 Z12-H13 H07-G07 H10-J07 H13-H10 J07-H07 Z12-F16 F16-G13 G13-F13
G13-G10 Z12-E16 B13-A14 C13-B13 E13-C13 E16-E13 Z12-C16 A16-A15 B16-A16 B16-A17 C16-B16
Z12-E18 A18-A19 B18-A18 C18-B18 E18-C18 Z12-B20 A21-A22 A22-A23 B20-A20 B20-A21 Z12-C20
B21-B22 B22-B23 B23-A24 C20-B21 Z12-E20 C21-E21 E20-C21 E20-F20 E21-E22 Z12-G20 G20-H20
H20-J20 F21-G21 G20-F21 Z12-F18 H18-J18 J18-K18 K18-L18 F18-H18 F27-F28 F28-H27 G25-F27
H27-K25 Z11-G25 H25-J25 J24-H25 J25-L24 L24-L23 Z11-J24 K23-L22 L22-M22 M22-N22 N22-P22
Z11-K23 J23-L21 L21-M21 M21-N21 Z11-J23 K21-N20 N20-P20 P20-Q20 Q20-P21 Z11-K21 H23-J22
J22-K20 K20-L20 L20-M20 Z11-H23 Z11-B27 Z11-D27 Z11-D28 Z11-E24 Z11-F25 Z11-G24

1.12 Export Cable Status

Black: Designed Red: Laid Green: Cable Fully Buried Blue: Accepted

Landfall – RCS – Z11
Landfall – RCS – Z12
Landfall – RCS – Z13

1.13 OSS Interlink Cable Status

Black: Designed Red: Laid Green: Cable Fully Buried Blue: Accepted

Z11 – Z12
Z12 – Z13

1.14 Notice to Mariners updates

Below is a list of the current Notice to Mariners;

Date	Subject	Updates
15/09/2017	Export Cable Trenching Works – Tideway Offshore (Lange Wapper)	Vessels work for next 7 days per below map.
07/09/2017	Export Cable Boulder Clearance Works	Vessels work for next 7 days per below map.
20/10/2017	Hornsea One UXO Detonation, Update 8.	UXO detonation delayed due to weather
03/11/2017	Met mast Works	None
17/11/2017	offshore boulder clearance works in the offshore wind farm area	
17/11/2017	offshore installation works in the offshore Wind Farm area with the installation of scour protection and foundations.	
04/12/2017	Deployment of Acoustic Waves and Current (AWAC) Profiler	
04/12/2017	Deployment of Noise Monitoring Equipment	

1.15 Safety Zones active

The table below indicates the Safety Zones that are active.

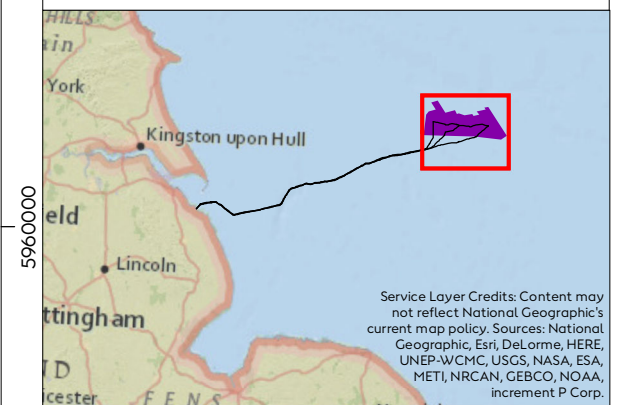
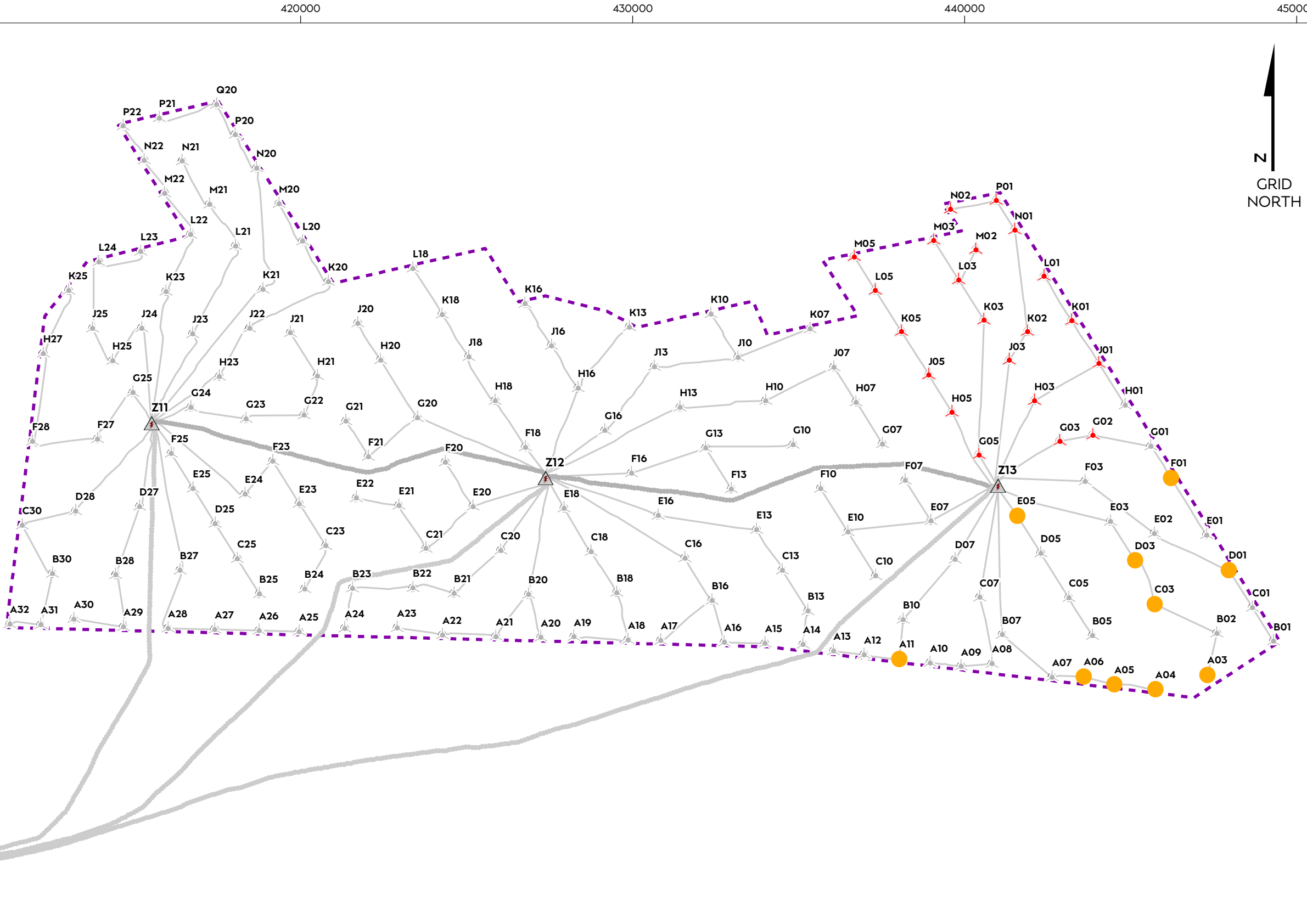
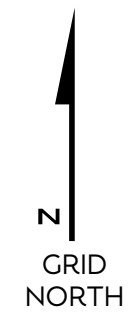
Vessel / Asset	Size	Duration
None		

Hornsea Project One

Weekly Look Ahead
Monday, January 8, 2018

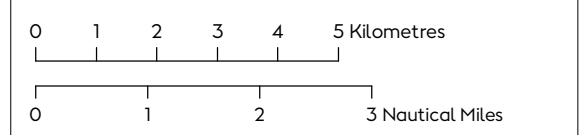
Vessel at Work

- Atlantic Explorer - Boulder Clearance
- Seahorse - Scour Protection Installation
- Lange Wapper - Pre Trenching Work
- No Planned Work



Service Layer Credits: Content may not reflect National Geographic's current map policy. Sources: National Geographic, Esri, DeLorme, HERE, UNEP-WCMC, USGS, NASA, ESA, METI, NRCAN, GEBCO, NOAA, increment P Corp.

Reference system: ETRS89 Scale@A3: 1:125000
Projection: UTM Zone31N
Vertical reference: LAT(VORF)



WeeklyLookAhead
Document no: HOW01651
Created by: XMAOH
Checked by: EADBR
Approved by: OLEJU