

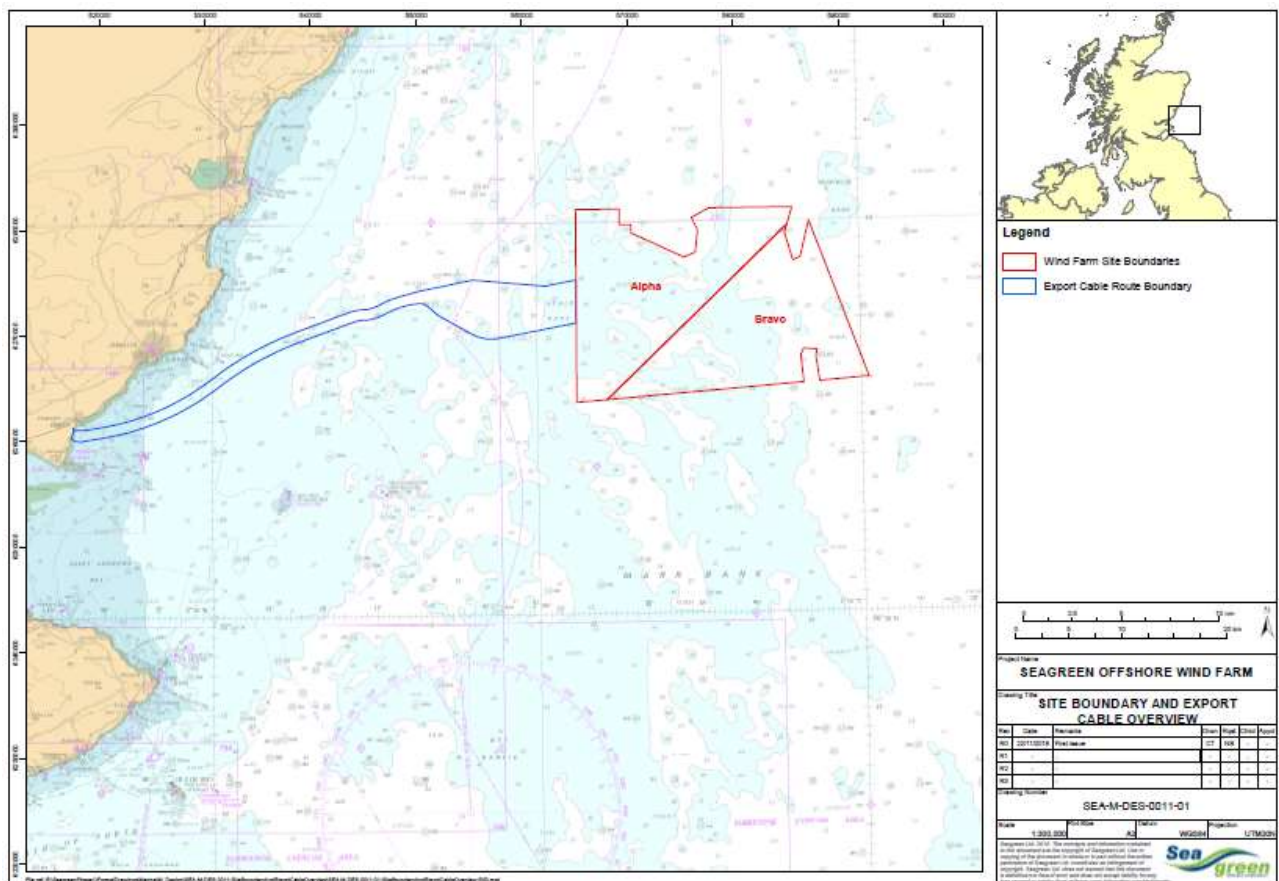
# NOTICE TO MARINERS

**Seagreen Wind Energy - Notice to Mariners 01/2019. Issue date 22/01/2019**

Mariners are advised that Seagreen Wind Energy will be conducting a Geotechnical Survey within the Seagreen Alpha and Seagreen Bravo wind farm site boundary (demarcated in red) and also the export cable corridor (demarcated in blue) identified below in Figure 1, with the respective co-ordinates listed in Table 1.

The survey work is being undertaken by Fugro and will be conducted from 2 No vessels: MV Fugro Scout and the MV Despina.

**Figure 1: Site Boundary**



The survey area is defined by the following WGS84 coordinates in Table 1, which provide the corner points for the wind farm site and the end points for the export cable corridor: -

**Table 1 – Site Boundary Coordinates**

Zone	Easting	Northing	Lat	Lon	Ref
30N	585626	6282280	56 40.607' N	1 36.151' W	Site Boundary NE 1
	587208	6281040	56 39.921' N	1 34.627' W	Site Boundary NE 2
	592965	6266280	56 31.901' N	1 29.311' W	Site Boundary SE
	565252	6263720	56 30.801' N	1 56.378' W	Site Boundary SW
	565125	6282000	56 40.654' N	1 56.226' W	Site Boundary NW
	565171	6275330	56 37.059' N	1 56.282' W	Cable Boundary NE
	565200	6271250	56 34.860' N	1 56.315' W	Cable Boundary SE
	517385	6260270	56 29.194' N	2 43.061' W	Cable Boundary SW
	517526	6261270	56 29.732' N	2 42.920' W	Cable Boundary NW

## Survey Vessels



**MV Fugro Scout**



**MV Despina**

The MV Fugro Scout is a DP II geotechnical drilling vessel with red hull and white topsides operated by Fugro Ltd.

The MV Despina is a DP II geotechnical drilling vessel with a red hull and white topsides operated by Fugro Ltd. The defining characteristic of this vessel is the Ulstein X-Bow.

### Vessel Contact Details

MV Fugro Scout	MV Despina
Vessel Call Sign: LAKW7	Vessel Call Sign: 9V3887
Inmarsat number (vessel): +870 601 016991	Inmarsat number (vessel): +870 601 081 726
Bridge: +47 23677200	Bridge: +47 2240 9685
Project Manager: +47 95304336	Project Manager: +31 622 406 224
Email: <a href="mailto:a.jareh@fugro.com">a.jareh@fugro.com</a>	Email: <a href="mailto:a.jareh@fugro.com">a.jareh@fugro.com</a>

### **Survey Duration**

The surveys are due to mobilise on 28<sup>th</sup> January though this may be delayed as a result of weather conditions. The expected completion of the geotechnical surveys will be by May 2019, weather permitting and therefore there may be the potential for an extension to the work duration.

### **Survey Tasks**

The survey is to be split into two distinct phases to be run concurrently:

1. A detailed, drilling based geotechnical survey will be conducted within the boundaries of Alpha and Bravo from the MV Fugro Scout at up to 15 No discreet locations.
2. A Seabed Frame CPT based campaign will be conducted within the boundaries of Alpha and Bravo and also the export cable corridor from the MV Despina.

During the survey campaign the vessels will be deploying underwater drilling and CPT equipment. During such times the survey vessels will have restricted ability to manoeuvre and therefore all other vessels are requested to fully comply with COLREGS obligations in respect of this.

As a consequence of the survey equipment deployed and the modes of operation all mariners are advised to keep a safe clearance of no less than 500m aft of the vessels.

### **Port of Operation**

The Despina and Fugro Scout are expected to mobilise from the port of Aberdeen in late January or early February.

### **Contact Details:**

Further marine enquiries should be addressed to the following person:

Ahmed Jareh – Project Manager/ Tel: +44 (0) 1491 820 657, +44 (0) 7818 594 288 (mob), Email: [a.jareh@fugro.com](mailto:a.jareh@fugro.com)

### **Contact Details – Fisheries Liaison**

Onshore fisheries liaison for this survey will be co-ordinated by Brown and May Marine (BMM). If there are commercial fishery queries please contact Jen Miller on 01379 872148 (mobile 07519 106002). There will be an offshore fisheries liaison officer (FLO) aboard one of the survey vessels. The offshore FLO will issue regular broadcasts whilst the survey vessel is operating to ensure minimal disruption and that vessels maintain an appropriate and safe distance.

Fishermen are requested to avoid undertaking any actions which could impede the survey vessel's ability to conduct its contracted work.

### **FURTHER DETAILS ARE AVAILABLE FROM:**

#### **Dave Sharp**

Seagreen Wind Energy Limited  
One Waterloo Street  
Glasgow  
G2 6AY

Mobile: +44 (0)777 3399334 E-mail: david.sharp@sse.com

## DISTRIBUTION LIST

Kingfisher	<a href="mailto:kingfisher@seafish.co.uk">kingfisher@seafish.co.uk</a>
The UKHO	<a href="mailto:sdr@ukho.gov.uk">sdr@ukho.gov.uk</a>
UKHO Navigation Warnings	<a href="mailto:navwarnings@btconnect.com">navwarnings@btconnect.com</a>
Shetland CGOC	<a href="mailto:Zone2@hmcg.gov.uk">Zone2@hmcg.gov.uk</a>
Aberdeen CGOC	<a href="mailto:Zone3@hmcg.gov.uk">Zone3@hmcg.gov.uk</a>
MCA Renewables liaison	<a href="mailto:Peter.Lowson@mcga.gov.uk">Peter.Lowson@mcga.gov.uk</a>
Northern Lighthouse Board	<a href="mailto:navigation@nlb.org.uk">navigation@nlb.org.uk</a>
Trinity House	<a href="mailto:navigation.directorate@thls.org">navigation.directorate@thls.org</a>
Forth Ports VTS	<a href="mailto:vts.operator@forthports.co.uk">vts.operator@forthports.co.uk</a>
Scrabster Harbour	<a href="mailto:harbour@scrabster.co.uk">harbour@scrabster.co.uk</a>
Wick Harbour	<a href="mailto:malcolm.bremner@wickharbour.co.uk">malcolm.bremner@wickharbour.co.uk</a>
Fraserburgh Harbour	<a href="mailto:enquiries@fraserburgh-harbour.co.uk">enquiries@fraserburgh-harbour.co.uk</a>
Aberdeen Harbour	<a href="mailto:info@aberdeen-harbour.co.uk">info@aberdeen-harbour.co.uk</a>
Montrose Port Authority	<a href="mailto:Thomash@montroseport.co.uk">Thomash@montroseport.co.uk</a>
Arbroath Harbourmaster	<a href="mailto:harbourmaster@angus.gov.uk">harbourmaster@angus.gov.uk</a>
Peterhead Port Authority	<a href="mailto:john.forman@peterheadport.co.uk">john.forman@peterheadport.co.uk</a>
RYA Scotland	<a href="mailto:admin@ryascotland.org.uk">admin@ryascotland.org.uk</a>
Clyde Cruising Club	<a href="mailto:Office@clyde.org">Office@clyde.org</a>
Scottish Fishermen's Federation	<a href="mailto:renewables@sff.co.uk">renewables@sff.co.uk</a>
Peterhead Fishery Office	<a href="mailto:FO.peterhead@gov.scot">FO.peterhead@gov.scot</a>
Aberdeen Fishery Office	<a href="mailto:FO.aberdeen@gov.scot">FO.aberdeen@gov.scot</a>
Fraserburgh Fishery Office	<a href="mailto:FO.fraserburgh@gov.scot">FO.fraserburgh@gov.scot</a>
Anstruther Fishery Office	<a href="mailto:FO.anstruther@gov.scot">FO.anstruther@gov.scot</a>
Marine Scotland	<a href="mailto:MS.MarineRenewables@gov.scot">MS.MarineRenewables@gov.scot</a>
Forth Estuary Forum	<a href="mailto:info@forthestuaryforum.co.uk">info@forthestuaryforum.co.uk</a>
Mainstream Renewable Power	<a href="mailto:David.Sweenie@edf-re.uk">David.Sweenie@edf-re.uk</a>
Red Rock Power	<a href="mailto:inchcapewind@redrockpower.co.uk">inchcapewind@redrockpower.co.uk</a>