

Notice to Mariners – Hornsea Four

Issued: 20 March 2019

UPDATE: Holderness Coast Nearshore Geophysical Survey

Reference: 01778215_A

1. INTRODUCTION

Owing to technical difficulties, Mariners are now advised that the Hornsea Four nearshore geophysical survey will recommence from 29th March 2019 (weather dependent) within the UK Sector of the North Sea off the East Yorkshire coast, as shown in Figure 1 of this notice. Survey work completion is anticipated by mid-May 2019.

2. AREA OF OPERATIONS

Activities will centre on the nearshore section of the Hornsea Four Offshore Wind Farm proposed export cable route. Coordinates are provided below.

Mariners are advised MaxSea and Olex plotter files can be provided by Brown and May Marine Limited and the Onshore Fisheries Industry Representative. Contact details listed below.

The survey vessels will be towing survey equipment and therefore require an adequate buffer to allow for turning circles, included within the stipulated survey areas shown in Figure 1.

The survey vessel will be deployed to survey locations within the survey area at times and positions determined by client requirements, weather and sea conditions. The survey vessel will likely operate out of Scarborough.

3. COORDINATES

ID	Longitude (WGS 84)	Latitude (WGS84)
A	0° 4' 49.065" W	54° 4' 7.522" N
B	0° 4' 7.497" W	54° 4' 8.016" N
C	0° 5' 13.200" W	54° 0' 49.554" N
D	0° 12' 48.977" W	54° 0' 32.746" N
E	0° 12' 54.000" W	54° 0' 58.189" N
F	0° 12' 59.019" W	54° 1' 58.965" N
G	0° 12' 39.178" W	54° 3' 35.609" N

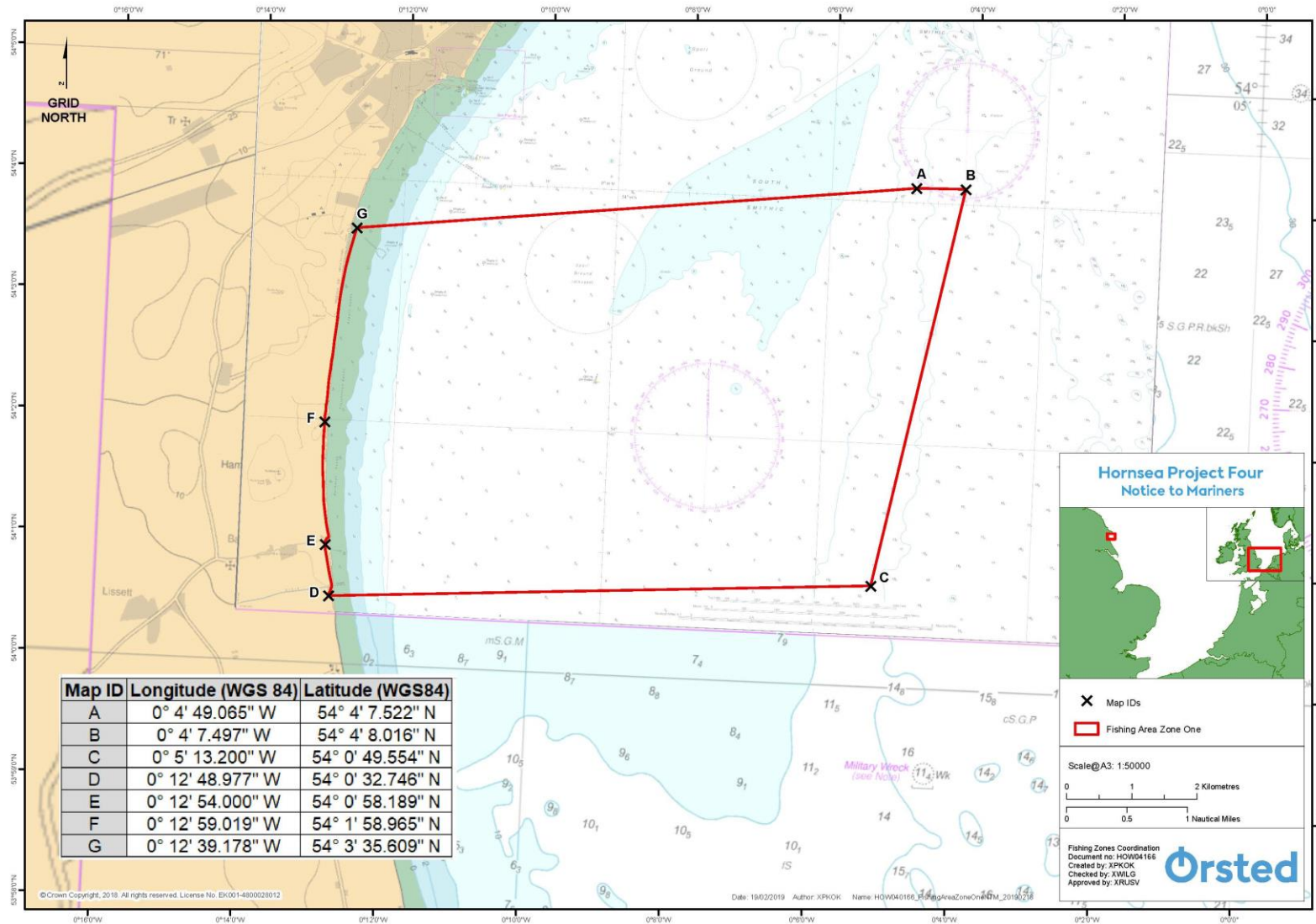


Figure 1. Hornsea Four Offshore Wind Farm Holderness Coast Nearshore Geophysical Survey Area.

4. SURVEY

Issued: 20 March 2019

Hornsea Four Offshore Wind Farm will be carrying out a geophysical survey with the vessel MV Proteus. A local scout vessel is also contracted to reduce potential for static fishing gear interactions.

Reference: 01778215_A

The survey is planned to commence on 29th March 2019. The exact survey dates are dependent on weather and actual progress, but the forecasted completion date as of the publication date of this notice is mid-May 2019.

The survey area will be covered using a full geophysical survey spread including towed equipment. It is requested that all vessels operating within the area keep a safe distance (at least 500m) and pass at minimum speed/reduced wash.

5. SAFETY

It is requested that anybody having prior knowledge of potentially submerged or moored objects on the seabed within the survey area, which could form a hazard to the survey vessel and/or equipment, advises the Project Onshore Fisheries Industry Representative.

Hornsea Four Offshore Wind Farm requests the clearance of static fishing gear within the boundary shown in Figure 1 and described in this Notice.

During survey a listening watch will be maintained on VHF Channels 12 and 16 when within the appropriate port authority area and will actively transmit an AIS signal. The survey vessels will also broadcast at regular daily intervals the vessel position, operational information and its intentions.

6. IMMEDIATE CONTACTS

Issued: 20 March 2019

Ørsted Project Manager – Roland Gotfredsen	
Tel: +45 9955 6391	Email: ROLGO@orsted.dk
Survey Vessel Manager – Simon Baldwin	
Tel: +44 7583 919 661	Email : simon.baldwin@bibbyhydromap.com

Reference: 01778215_A

7. FISHERIES LIAISON

Onshore Fisheries Industry Representative – Nick Garside	
Tel: +44 7538 827 013	Email: nick.garside@live.co.uk
Brown & May Marine Ltd – Alex Winrow-Giffin	
Tel: +44 7760 160 039	Email: alex@brownmay.com

In the event the Onshore Fisheries Liaison is not contactable please direct fisheries enquiries related to the survey works to the Ørsted Company Fisheries Liaison Officer:

Company Fisheries Liaison Officer – Sophie Farenden	
Tel: +44 755 117 6795	E-mail: XSFAR@orsted.co.uk

An Offshore Fisheries Liaison Officer will be on-board the survey/scout vessel during the works, contactable on VHF channel 16.

8. VESSELS

Issued: 20 March 2019

Survey Vessel – MV Proteus	
Tel: +44 (0)7889 812 507	Vessel Email: Proteus@bibbyhydromap.com
	Part Chief Email: pc.proteus@bibbyhydromap.com

Reference: 01778215_A

Name	MV Proteus
Flag	British
MMSI Number	235102268
Call Sign	2HBL7



Length	14.0 m
Breadth	4.96 m
Draught	1.3 m
Engine	2 x Cummins QSC 8.3 500 hp. Turbo charged 6 cylinder high speed diesel