

# Notice to Mariners



## NOTICE TO MARINERS - HORNSEA PROJECT ONE Export Cable Nearshore Survey

Hornsea Project One – Notice to Mariners February 2020. Issued 20/02/2020

### 1. INTRODUCTION

Mariners are advised that Hornsea Project One will be undertaking geophysical survey along the nearshore part of offshore export cable corridor. Hornsea Project One Offshore Wind Farm is located within the UK Sector of the North Sea off the coast of East Yorkshire.

Nearshore geophysical survey works will commence with Spectrum 2 on or about **22 February 2020** in the areas shown on the map below.

### 2. SAFETY

It is requested that anybody having knowledge of any potential objects submerged or moored on the seabed, within the area of operations, that could be damaged or form a hazard to the works vessels and their equipment, advises the Projects Fishing Industry Liaison of their position and nature.

When works commence a listening watch will be maintained on VHF Channel 12 and 16 when within the appropriate port authority area, and will actively transmit an AIS signal. The vessels will also broadcast at regular daily intervals, vessel position, operational information and intentions.

### 3. IMMEDIATE CONTACTS

The contents of this notice are based upon our current understanding of Hornsea Project One requirements. A further notice will be issued with any further updates, as well as Weekly Notice of Operations throughout the Works. Enquiries regarding the contents of this Notice to Mariners or any other matters should be directed to:

Export Cable Works		
<b>Project Manager</b>	<b>Adam Cross</b>	
Tel: +44(0) 1590 820052	Mob: +44(0) 7841902875	E-mail: adam@spectrum-offshore.com

### 4. FISHERIES LIAISON

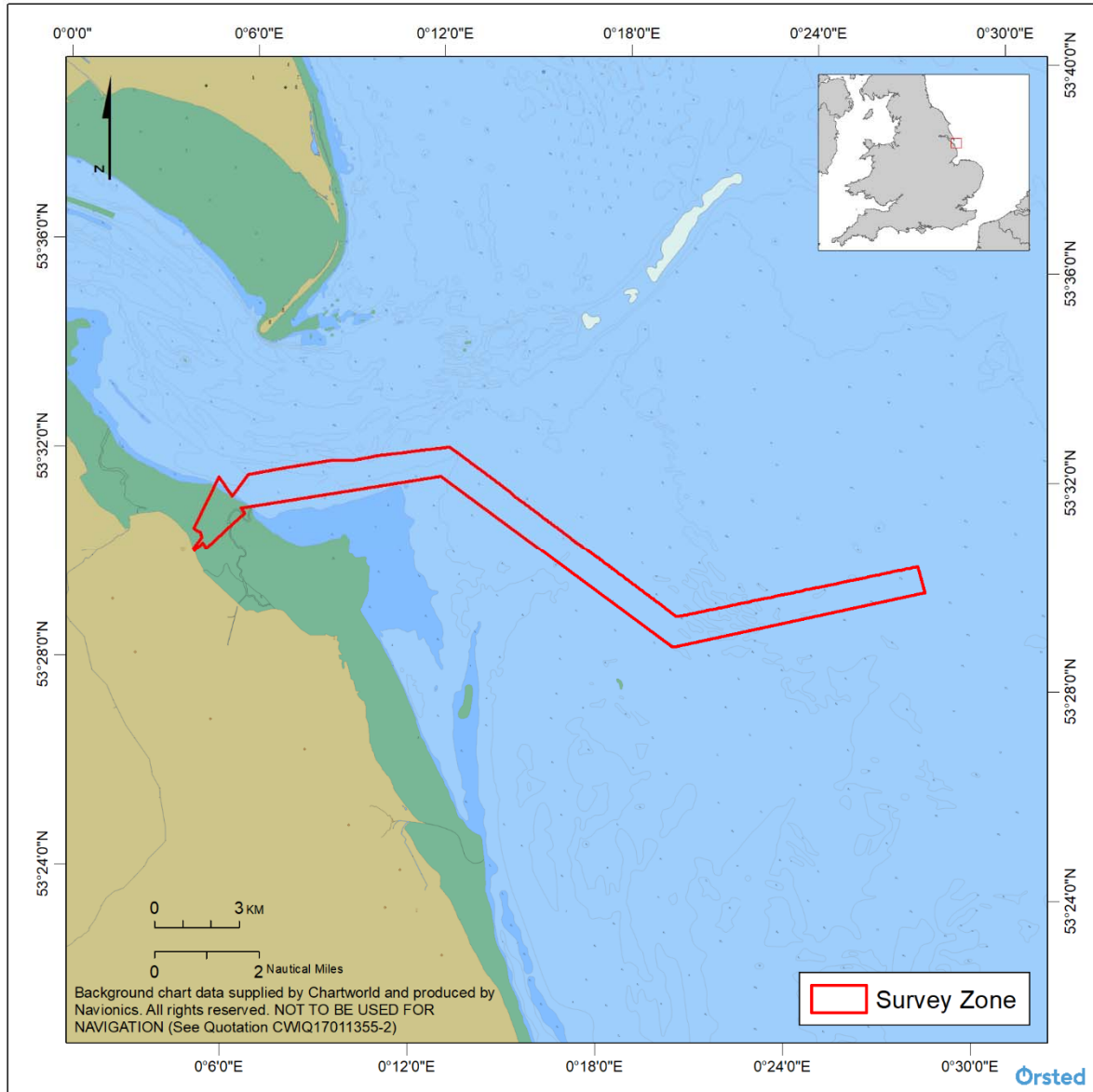
Project One Onshore Fisheries Liaison is provided by Nick Garside and Alex Winrow-Giffin and can be contacted on:

Mob: +44 (0) 7538 827 013      Email: [nick.garside@live.co.uk](mailto:nick.garside@live.co.uk)  
Mob: +44 (0) 7760 160 039      Email: [alex@brownmay.com](mailto:alex@brownmay.com)

Prepared      Adam Cross (Spectrum) 20 February 2020  
Accepted      Neil O'Donnel (NEDON) 20 February 2020  
Approved      Dirk Wilyman (DIRKW) 20 February 2020  
Doc. no.      05905284\_A

## 5. OPERATIONS

Activities will be in the Hornsea Project One offshore wind farm nearshore export cable corridor within the redline boundary as shown on the map below.



The coordinates of the worksites are as follows:

LONG	LAT
0° 4,567' E	53° 30,099' N
0° 4,521' E	53° 30,133' N
0° 4,779' E	53° 30,361' N
0° 4,752' E	53° 30,421' N
0° 4,725' E	53° 30,460' N
0° 4,639' E	53° 30,478' N
0° 4,560' E	53° 30,509' N
0° 4,524' E	53° 30,531' N
0° 5,263' E	53° 31,533' N
0° 5,709' E	53° 31,184' N

0° 6,181' E	53° 31,601' N
0° 7,206' E	53° 31,738' N
0° 8,855' E	53° 31,942' N
0° 9,559' E	53° 31,954' N
0° 10,299' E	53° 32,062' N
0° 10,300' E	53° 32,059' N
0° 12,618' E	53° 32,283' N
0° 14,603' E	53° 31,468' N
0° 14,721' E	53° 31,401' N
0° 15,100' E	53° 31,250' N
0° 16,333' E	53° 30,744' N
0° 16,686' E	53° 30,589' N
0° 16,825' E	53° 30,531' N
0° 16,966' E	53° 30,480' N
0° 18,118' E	53° 30,009' N
0° 20,100' E	53° 29,192' N
0° 20,539' E	53° 29,248' N
0° 27,776' E	53° 30,315' N
0° 28,041' E	53° 29,820' N
0° 20,110' E	53° 28,615' N
0° 20,064' E	53° 28,611' N
0° 20,005' E	53° 28,615' N
0° 19,928' E	53° 28,635' N
0° 12,362' E	53° 31,719' N
0° 5,998' E	53° 30,957' N
0° 6,120' E	53° 30,862' N
0° 4,933' E	53° 30,150' N
0° 4,883' E	53° 30,197' N
0° 4,832' E	53° 30,258' N
0° 4,567' E	53° 30,099' N

The vessel will be deployed to offshore locations within the above section of the export cable corridor, at times and positions determined by client requirements, weather and sea conditions.

The operations will be undertaken with Spectrum 2. The exact finish date is dependent on the prevailing weather conditions, vessel downtime and survey progress.

The vessel will be undertaking geophysical survey, and this will restrict its ability to manoeuvre. It will be requested that all vessels operating within the area keep a safe distance (500m) and pass at minimum speed to reduce vessel wash.

Operations will be conducted on a 24 hour basis. Throughout operations the vessels will be displaying the shapes and lights prescribed in the International Rules for the Prevention of Collisions at Sea (COLREGS) Rule 27. Displaying the prescribed shapes and lights when the vessel is restricted in its ability to manoeuvre.

## 6. VESSELS

Vessel details are provided below. Contact can be made directly with the vessel using the contact details listed below. Contractor contact details are provided in Section 3 of this NTM.

Vessel Contact Details (Spectrum 2)	
Sat Phone	N/A
Email	Spectrum2@spectrum-offshore.com

General Information (Spectrum 2)
----------------------------------

<b>Name</b>	Spectrum 2
<b>Flag</b>	UK
<b>Year Built</b>	2013
<b>IMO Number</b>	N/A
<b>Call Sign</b>	2GHE5
<b>Class</b>	MCA Workboat Code



<b>Dimensions</b>	
<b>Length</b>	21.30m
<b>Beam</b>	7.66m
<b>Draught</b>	1.10m
<b>Gross Tonnage</b>	37.57

## 7. DISTRIBUTION LIST

This NTM will also be distributed to the relevant local MMO offices, local IFCA's NFFO, Rederscentrale, HFIG, Danish Fishermen's Association, EEFPPO and VisNed.