



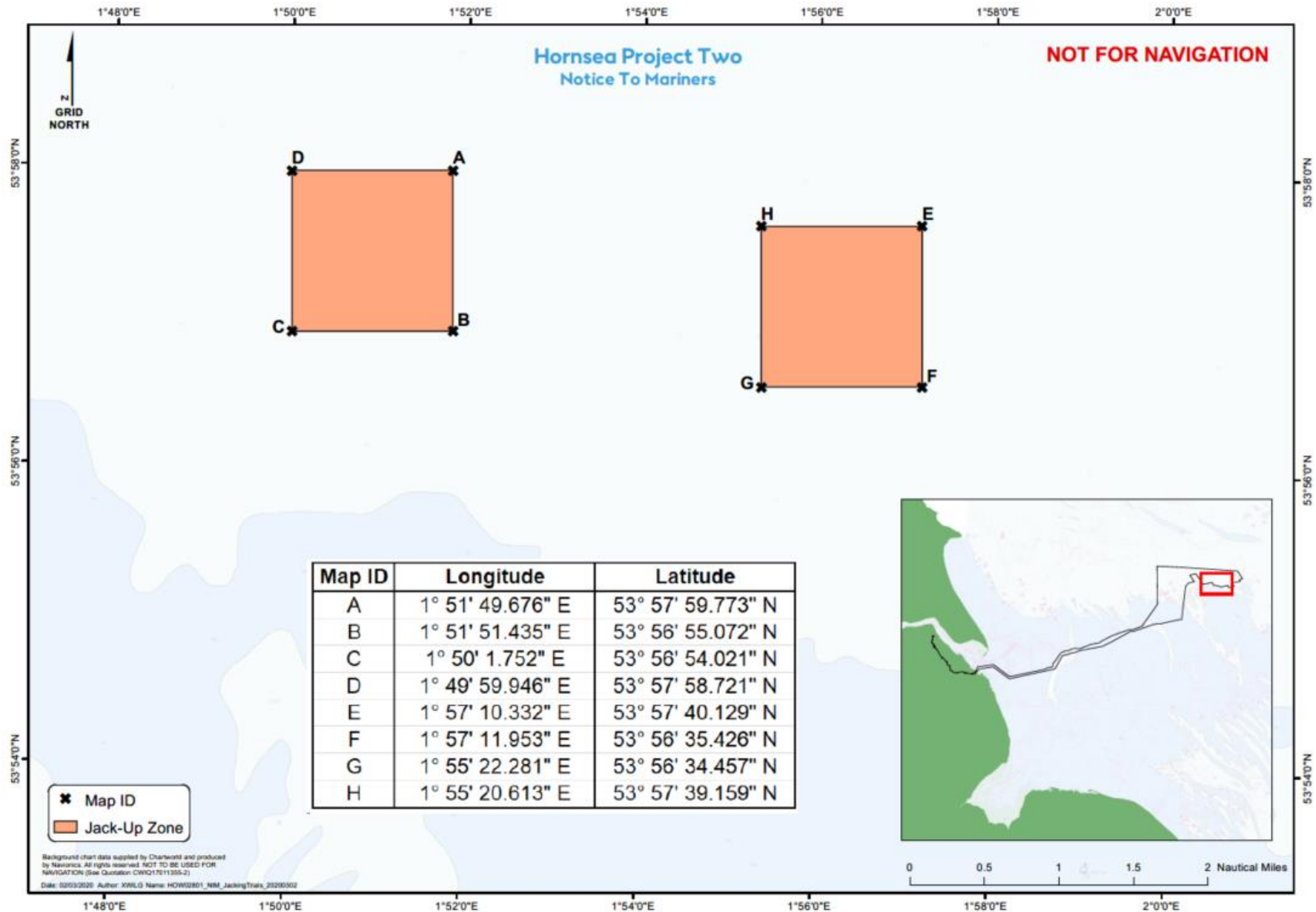
Notice to Mariners

Notice of Completed Temporary Jack-Up – Issued 10/03/2020

1. INTRODUCTION

Mariners are advised that DEMA have completed undertaking temporary jack-ups for the proposed Hornsea Project Two Offshore Wind Farm (Hornsea Project Two) at the two locations within the Hornsea Project Two Array area as shown in Figure 1.

Figure 1. Jack-Up Area



1.2 Safety

Further notices shall be issued when relevant for any additional operations being undertaken within the Hornsea Project Two area.

2. IMMEDIATE CONTACTS

The contents of this notice are based upon our current understanding of DEME's requirements.

Enquiries regarding the contents of this Notice to Mariners or any other matters should be directed to:

Project Manager (DEME) (Office hours only)	Lena Gronholdt	
	Mob: +4552 139488	E-mail: Groenholdt.Lena@deme-group.com
Vessel Manager (Sea Challenger)	Brian Benedixen	
	Tel: +4552 139580	E-mail: captain.seachallenger@deme-group.com

3. FISHERIES LIAISON

Onshore Fisheries Liaison for this survey is provided by Nick Garside and Sophie Farenden who can be contacted on:

E-mail: nick.garside@live.co.uk	Mob: +44 (0) 7538 827013
Email: sophie.farenden@brownmay.com	Mob: +44 (0)7525 128344

4. VESSELS


Temporary jack-up operations are conducted by the Sea Challenger. Contact can be made directly with the vessel, where necessary, using the contact details listed below. Client and contractor contact details are provided in Section 4 and 5 of this NtM.

Vessel Contact Details – Sea Challenger	
Vessel telephone	+4552 139580
Vessel email	captain.seachallenger@deme-group.com

5. COORDINATES

The coordinates as shown in Figure 1 are provided below in Table 1 for ease of use.

Map ID	Longitude	Latitude
A	1° 51' 49.676" E	53° 57' 59.773" N
B	1° 51' 51.435" E	53° 56' 55.072" N
C	1° 50' 1.752" E	53° 56' 54.021" N
D	1° 49' 59.946" E	53° 57' 58.721" N
E	1° 57' 10.332" E	53° 57' 40.129" N
F	1° 57' 11.953" E	53° 56' 35.426" N
G	1° 55' 22.281" E	53° 56' 34.457" N
H	1° 55' 20.613" E	53° 57' 39.159" N

General Information	
Name	Sea Challenger
Flag	Denmark [DK]
Year Built	2014
MMSI Number	219019002
Call Sign	OWLQ2
Class	MCA Cat 1 Platform Vessel
	
Dimensions	
Length	133.25m
Breadth	39m
Draft	6.8m

Shipspotting.com