



# Notice to Mariners

**Notice of Temporary Jack-Up – Issued 02/03/2020**

## **1. INTRODUCTION**

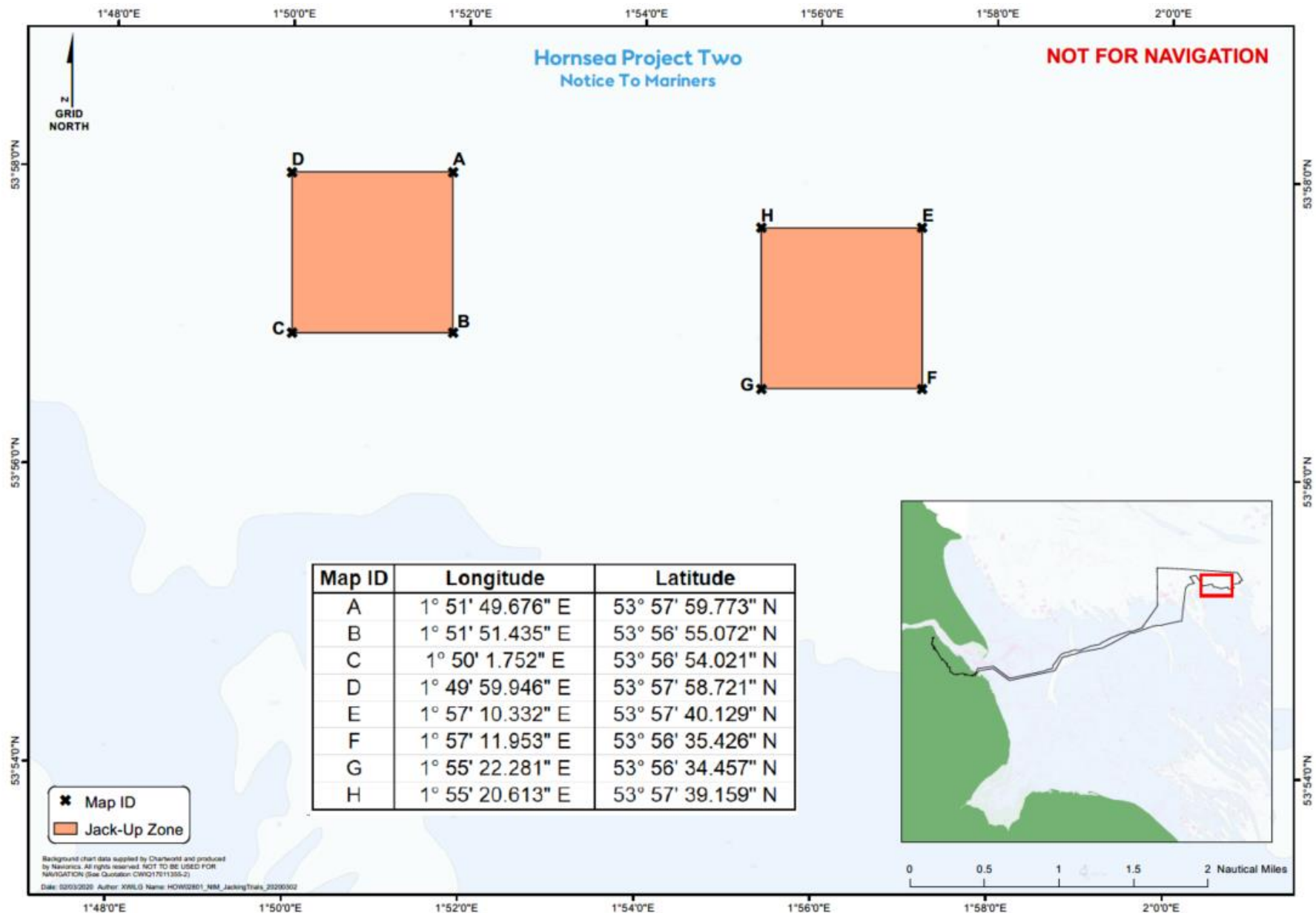
Mariners are advised that DEME will be undertaking temporary jack-ups for the proposed Hornsea Project Two Offshore Wind Farm (Hornsea Project Two).

## **2. AREA OF OPERATIONS**

Activities will take place at around two locations within the Hornsea Project Two Array area as shown in Figure 1. The coordinates of the proposed trials are provided in Figure 1 and Table 1.

The vessel is expected to operate out of Great Yarmouth.

Figure 1. Proposed Jack-Up Area



### 3. SURVEY

#### 3.1 Temporary Jack-Up

Please be advised that DEME will be carrying out temporary jack-up operations using the Sea Challenger within the Hornsea Project Two Wind Tube Generator (WTG) Array Area.

The Sea Challenger is expected to arrive on site on or after the 3<sup>rd</sup> March 2020 with the trials expected to take 1 days. The exact trial dates are dependent on weather and work progress. When the works are complete, this Notice will be updated and re-issued.

It is requested that all vessels operating near the proposed survey area keep a safe distance and pass at minimum speed.

#### 3.2 Safety

It is requested that anybody having knowledge of any potential objects submerged or moored on the seabed within the trial area that could be damaged or form a hazard to the jack-up vessel advises the Project Manager of their position and nature. When trials commence a listening watch will be maintained on VHF Channel 12 and 16 when within the appropriate port authority area and will actively transmit an AIS signal. The platform vessel will also broadcast at regular daily intervals the vessel position, operational information and intentions.

### 4. IMMEDIATE CONTACTS

The contents of this notice are based upon our current understanding of DEME's requirements. A further notice will be issued once survey operations are completed.

Enquiries regarding the contents of this Notice to Mariners or any other matters should be directed to:

<b>Project Manager (DEME)</b> (Office hours only)	Lena Gronholdt	
	Mob: +4552 139488	E-mail: <a href="mailto:Groenholdt.Lena@deme-group.com">Groenholdt.Lena@deme-group.com</a>
<b>Vessel Manager (Sea Challenger)</b>	Brian Benedixen	
	Tel: +4552 139580	E-mail: <a href="mailto:captain.seachallenger@deme-group.com">captain.seachallenger@deme-group.com</a>

### 5. FISHERIES LIAISON

Onshore Fisheries Liaison for this survey is provided by Nick Garside and Sophie Farenden who can be contacted on:

E-mail: <a href="mailto:nick.garside@live.co.uk">nick.garside@live.co.uk</a>	Mob: +44 (0) 7538 827013
Email: <a href="mailto:sophie.farenden@brownmay.com">sophie.farenden@brownmay.com</a>	Mob: +44 (0)7525 128344

### 6. VESSELS


Temporary jack-up operations will be conducted by the Sea Challenger. Contact can be made directly with the vessel, where necessary, using the contact details listed below. Client and contractor contact details are provided in Section 4 and 5 of this NtM.

Vessel Contact Details – Sea Challenger	
Vessel telephone	+4552 139580
Vessel email	captain.seachallenger@deme-group.com

## 7. COORDINATES

The coordinates as shown in Figure 1 are provided below in Table 1 for ease of use.

Map ID	Longitude	Latitude
A	1° 51' 49.676" E	53° 57' 59.773" N
B	1° 51' 51.435" E	53° 56' 55.072" N
C	1° 50' 1.752" E	53° 56' 54.021" N
D	1° 49' 59.946" E	53° 57' 58.721" N
E	1° 57' 10.332" E	53° 57' 40.129" N
F	1° 57' 11.953" E	53° 56' 35.426" N
G	1° 55' 22.281" E	53° 56' 34.457" N
H	1° 55' 20.613" E	53° 57' 39.159" N

General Information	
<b>Name</b>	Sea Challenger
<b>Flag</b>	Denmark [DK]
<b>Year Built</b>	2014
<b>MMSI Number</b>	219019002
<b>Call Sign</b>	OWLQ2
<b>Class</b>	MCA Cat 1 Platform Vessel
	
Dimensions	
<b>Length</b>	133.25m
<b>Breadth</b>	39m
<b>Draft</b>	6.8m

Shiptesting.com