



## Notice to Mariners – Hornsea Project Two

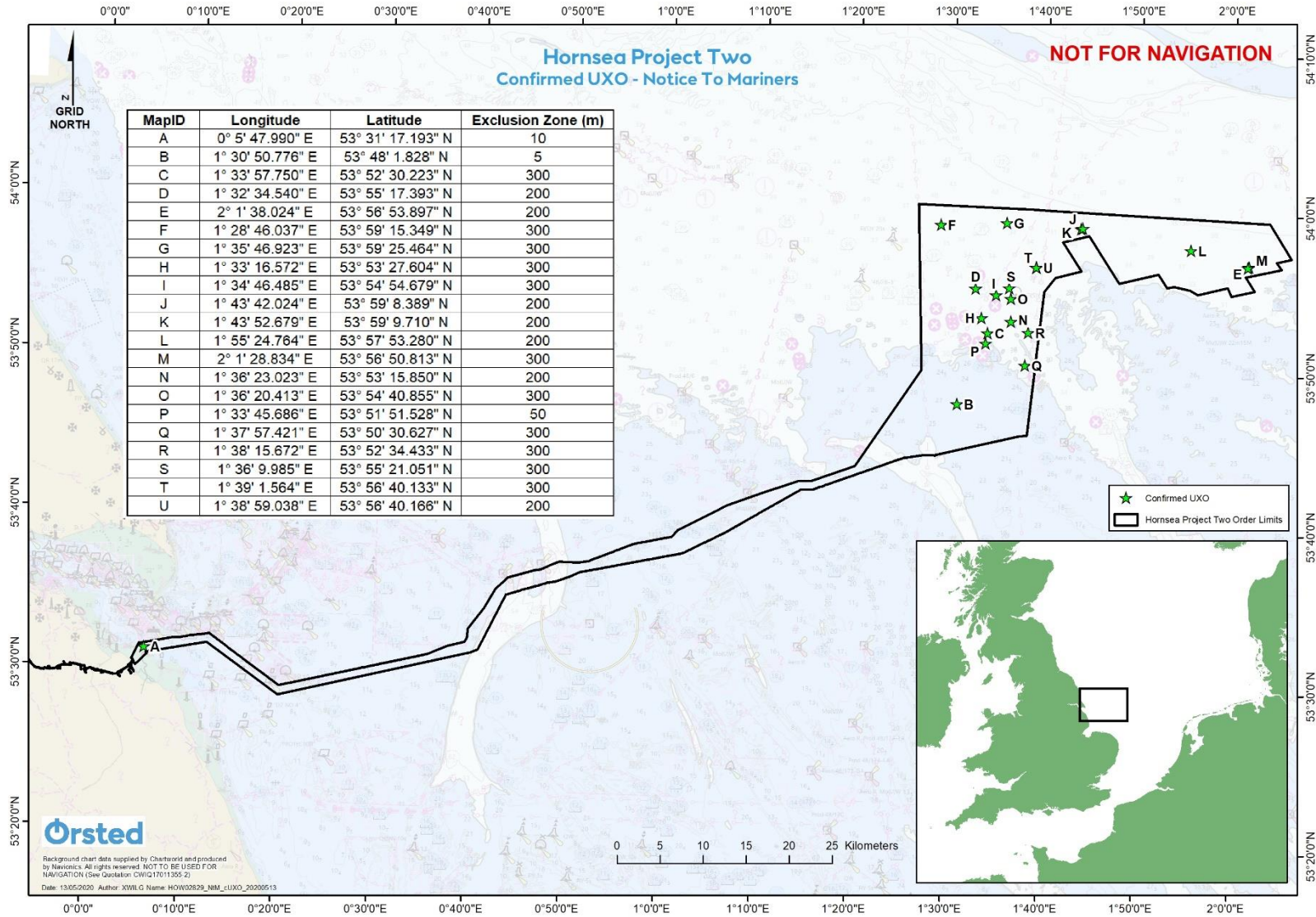
### Notice of Confirmed Unexploded Ordnance – Issued 13/05/2020

#### 1. INTRODUCTION

Mariners are advised that Hornsea Project Two confirms the presence of 8 additional Unexploded Ordnance (cUXO) as yet undetonated within the Hornsea Project Two array area, the coordinates of which are provided in Table 1 and shown in Figure 1. The cUXOs within the array area are in addition to the three cUXOs that remain within the export cable route with coordinates also provided in Table 1 and shown in Figure 1. The potential UXO (pUXO) inspections will continue using the Kamara, prior to the Explosive Ordnance Detonation (EOD) phase taking place. Works are expected to be complete by 1<sup>st</sup> September 2020.

All vessels are requested to maintain the required safe distances as defined from the coordinates set out in Table 1 and shown in Figure 1.

Figure 1. Identified cUXO Locations



## 2. SAFETY

The contents of this Notice are based on our current understanding of Hornsea Project Two requirements. Further notices shall be issued when relevant as the campaign progresses.

Vessels are required to maintain a minimum 1,000m exclusion zone radius around the vessel during the explosive ordnance detonation (EOD) works.

During the works, a listening watch will be maintained on VHF Channel 12 and 16 within the appropriate port authority area and the vessels will actively submit an AIS signal. The vessels will also broadcast, at regular daily intervals, the vessel positions, operational information and intentions.

## 3. IMMEDIATE CONTACTS

Enquiries regarding the contents of this Notice to Mariners or any other matters should be directed to:

<b>Project Manager (Ørsted)</b> (Office hours only)	Mira Rosten	
	Mob: +44 (0)7824 545178	E-mail: <a href="mailto:mirro@orsted.co.uk">mirro@orsted.co.uk</a>

## 4. FISHERIES LIAISON

Project Two Onshore Fisheries Liaison for this survey is provided by Nick Garside and Sophie Farenden who can be contacted on:

E-mail: <a href="mailto:nick.garside@live.co.uk">nick.garside@live.co.uk</a>	Mob: +44 (0) 7538 827013
Email: <a href="mailto:sophie.farenden@brownmay.com">sophie.farenden@brownmay.com</a>	Mob: +44 (0) 7525 128344

An Offshore FLO will be present on the Guard Vessel.

In the event the Onshore Fisheries Liaison is not contactable please direct fisheries enquiries related to the survey works to the Ørsted Company Fisheries Liaison Officer:

Company Fisheries Liaison Officer – Courtney French	Tel: +44 (0)7796 447 372	E-mail: <a href="mailto:CONFR@orsted.co.uk">CONFR@orsted.co.uk</a>
--------------------------------------------------------	--------------------------	-----------------------------------------------------------------------

## 5. VESSELS

The pUXO inspections are conducted by the Kamara. Following completion of inspections, EOD works are carried out by the Kamara and supported by a Guard Vessel and Bubble Curtain Vessel (TBD). Contact can be made directly with the vessels, where necessary, using the contact details listed below. Support vessel details will be added once confirmed. Client and contractor contact details are provided in Section 3 and 4 of this Notice.

Vessel Contact Details - Kamara	
Vessel Telephone	Bridge (VSAT): +47 23678262 Mobile: +31 6 27849689
Vessel E-mail	<a href="mailto:Kamara-Captain@boskalis.com">Kamara-Captain@boskalis.com</a> <a href="mailto:Kamara-bridge@boskalis.com">Kamara-bridge@boskalis.com</a>

## 6. COORDINATES

Table 1: Coordinates of Identified cUXO within export cable corridor (ID: A, B & C) and array area

ID	WGS84		Exclusion Zone Radius (m)
	Longitude (DMS)	Latitude (DMS)	
A	0° 5' 47.990" E	53° 31' 17.193" N	10
B	1° 30' 50.776" E	53° 48' 1.828" N	5
C	1° 33' 57.750" E	53° 52' 30.223" N	300
D	1° 32' 34.540" E	53° 55' 17.393" N	200
E	2° 1' 38.024" E	53° 56' 53.897" N	200
F	1° 28' 46.037" E	53° 59' 15.349" N	300
G	1° 35' 46.923" E	53° 59' 25.464" N	300
H	1° 33' 16.572" E	53° 53' 27.604" N	300
I	1° 34' 46.485" E	53° 54' 54.679" N	300
J	1° 43' 42.024" E	53° 59' 8.389" N	200
K	1° 43' 52.679" E	53° 59' 9.710" N	200
L	1° 55' 24.764" E	53° 57' 53.280" N	200
M	2° 1' 28.834" E	53° 56' 50.813" N	300
N	1° 36' 23.023" E	53° 53' 15.850" N	200
O	1° 36' 20.413" E	53° 54' 40.855" N	300
P	1° 33' 45.686" E	53° 51' 51.528" N	50
Q	1° 37' 57.421" E	53° 50' 30.627" N	300
R	1° 38' 15.672" E	53° 52' 34.433" N	300
S	1° 36' 9.985" E	53° 55' 21.051" N	300
T	1° 39' 1.564" E	53° 56' 40.133" N	300
U	1° 38' 59.038" E	53° 56' 40.166" N	200